

## **Notice of Study Completion Class Environmental Assessment Stormwater Management Master Plan (SWMMP)**

The Municipality of Lambton Shores (Municipality) has completed a Stormwater Management (SWM) Master Plan (SWMMP) to establish a much-needed road map for the Municipality to advance the development of a comprehensive stormwater management strategy to address current and future needs within the Village of Grand Bend (Village).

The Master Plan has been completed with a level of detail sufficient to fulfil the requirements for projects classified as Schedule B in the Municipal Class Environmental Assessment; however more detailed studies for each of the projects in the Master Plan classified as Schedule C will be done later.

Based on the study findings and input from technical agencies and the public, the recommended Master Plan is as shown on the attached **Figures 5-1-a** and **5-1-b**. The Master Plan identifies the recommended infrastructure to service the future growth of the Town while minimizing environmental impacts. The recommended Master Plan incorporates the comments received from the public and agencies during the Study.

Comments are now closed.

For further information on the project, or on the planning process being followed consult

[lambtonshores.ca/GrandBendSWMMP](http://lambtonshores.ca/GrandBendSWMMP)

or contact:

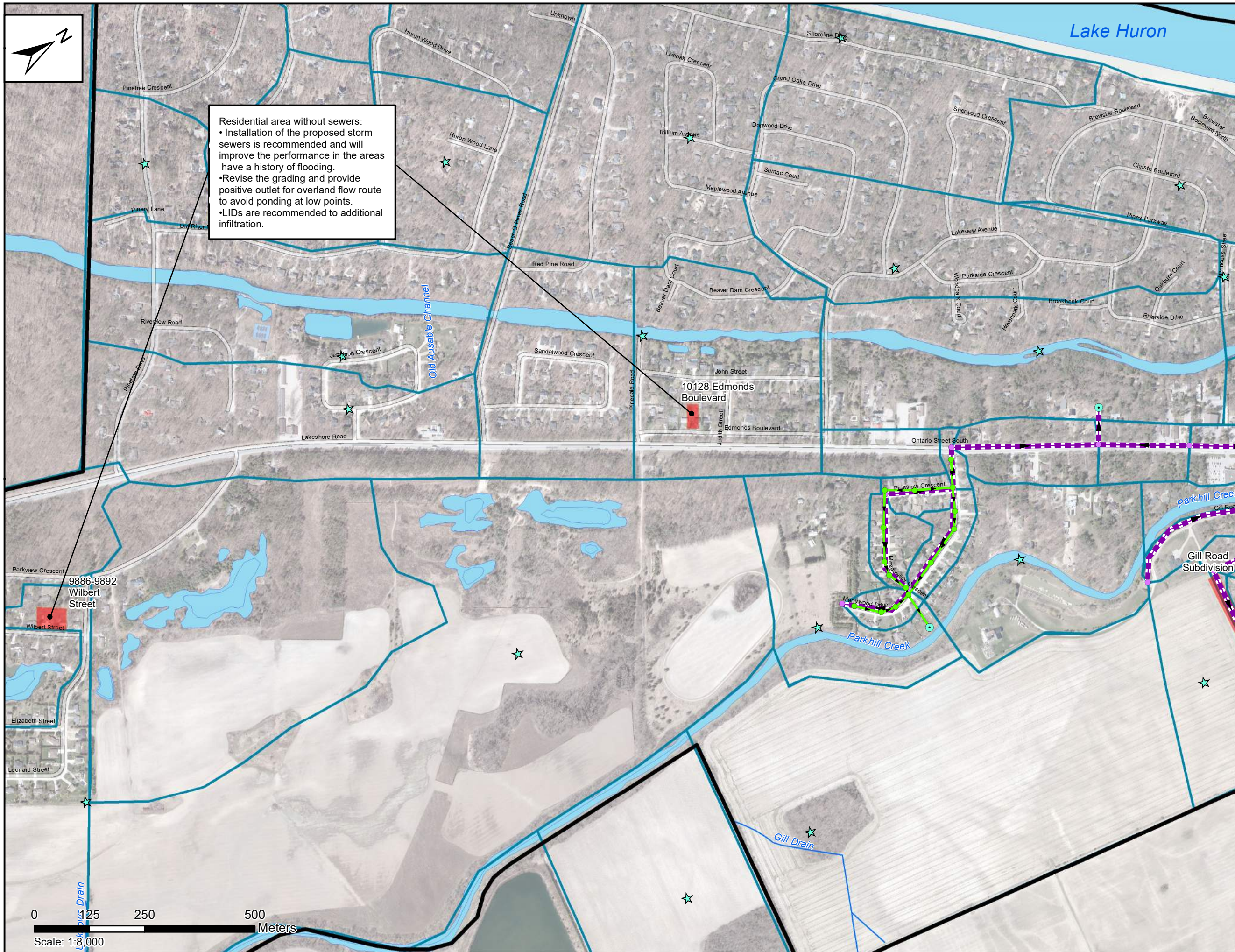
Sam Shannon, Infrastructure Manager, 9575 Port Franks Road, Thedford, ON N0M 2N0, (P) 519-243-1400 Ext.8215, [sshannon@lambtonshores.ca](mailto:sshannon@lambtonshores.ca)

And/Or

Roy Johnson B.ENG., P.ENG., MA.SC., Senior Project Manager - Water Resources,  
[roy.johnson@arcadis.com](mailto:roy.johnson@arcadis.com)

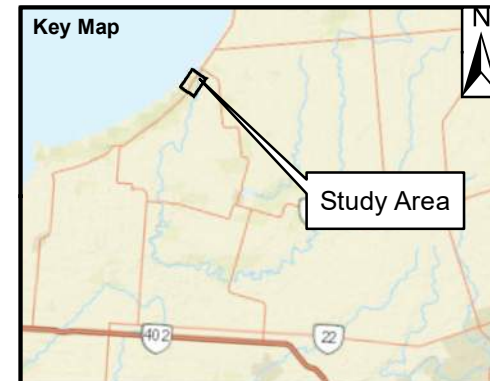
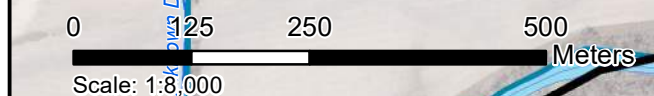
This Notice issued October 30, 2024.

Sam Shannon, Infrastructure Manager, Municipality of Lambton Shores.



Residential area without sewers:  
 • Installation of the proposed storm sewers is recommended and will improve the performance in the areas have a history of flooding.  
 • Revise the grading and provide positive outlet for overland flow route to avoid ponding at low points.  
 • LIDs are recommended to additional infiltration.

10128 Edmonds Boulevard



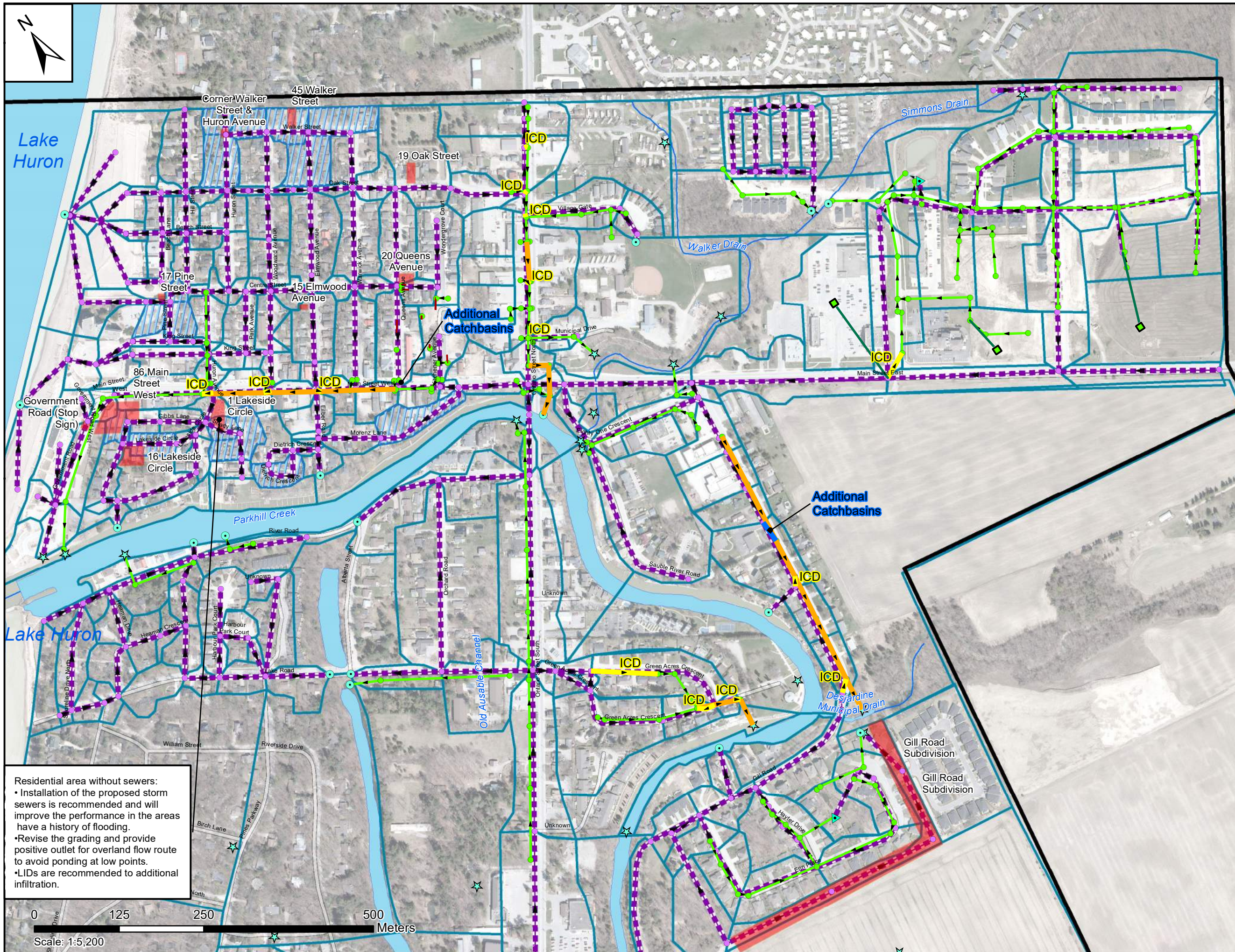
- Legend**
- Village of Grand Bend Municipal Boundaries
  - Waterbodies
  - Municipal Drain
  - Storm Outfall
  - Low Point/Assumed Outfall - Refer to TM#2 Memo for Details
  - SWM Pond
  - Link from Minor to Major System at CB Locations
  - Infiltration Trench
  - Subcatchment
  - Identified Problematic
- Minor System Hydraulic Components:**
- Minor Junction (MH/CBs)
  - Minor Conduit (Stormwater Pipes)
  - Inlet Control Device
  - Upsized Pipes
  - Additional Catchbasins
- Major System Hydraulic Components:**
- Minor Junction of Major System Flow Paths
  - Major Conduit (Overland Flow Path)

**Figure 5-1-a Rural Potential SWM Alternatives and Recommendations for Problematic Areas Map**

Grand Bend Stormwater Management Master Plan



Project No. 141850	Date: December 2023
-----------------------	------------------------



- Legend**
- ▲ SWM Pond
  - Storm Outfall
  - ☆ Low Point/Assumed Outfall - Refer to TM#2 Memo for Details
  - On-Site SWM Control
  - ▶ Link from Minor to Major System at CB Locations
  - Orifice
  - Infiltration Trench
  - Municipal Drain
  - ▨ LID Applied Subcatchment
  - ▭ Village of Grand Bend Municipal Boundaries
  - Identified Problematic Area
  - ▭ Subcatchment Areas
  - ▭ Waterbodies
- Minor System Hydraulic Components:**
- Minor Junction (MH/CBs)
  - Minor Conduit (Stormwater Pipes)
  - ▶ Upsized Pipes
  - ▶ Inlet Control Device
  - ▭ Additional Catchbasins
- Major System Hydraulic Components:**
- Minor Junction of Major System Flow Paths
  - Major Conduit (Overland Flow Path)

**Figure 5-1-b Urban Potential SWM Alternatives and Recommendations for Problematic Areas Map**

Grand Bend Stormwater Management Master Plan



Project No.	Date:
141850	December 2023

Residential area without sewers:

- Installation of the proposed storm sewers is recommended and will improve the performance in the areas have a history of flooding.
- Revise the grading and provide positive outlet for overland flow route to avoid ponding at low points.
- LIDs are recommended to additional infiltration.

