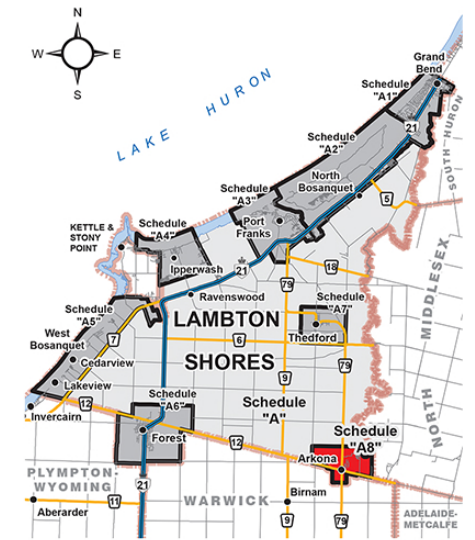


The Municipality of Lambton Shores OFFICIAL PLAN Schedule "A8" Natural Heritage (Arkona)



The Municipality of Lambton Shores OFFICIAL PLAN Schedule "A8" - Natural Heritage (Arkona)

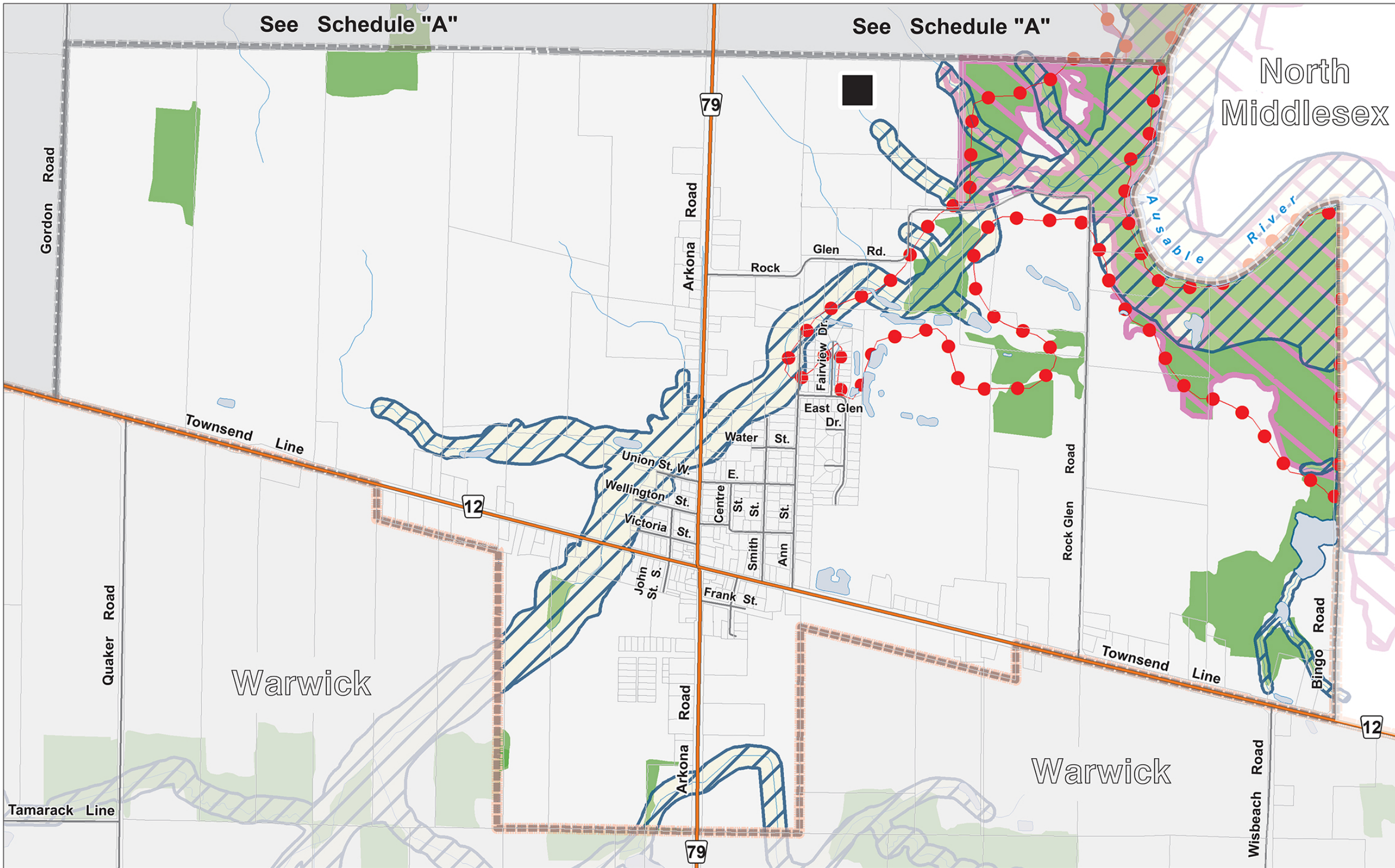
to By-law No. 66 of 2024
Passed this 16 day of August, 2024

Doug Cook, Mayor

Stephanie Troyer-Boyd, Clerk

Official Plan Amendments

OPA # 10, August 16, 2024



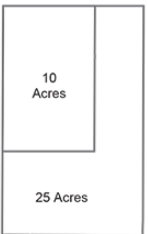
LEGEND

- Assessment Parcels
- Rivers - Streams - Drainage
- Roads
- Provincial Highway
- Waterbodies
- Sewage Treatment Works
- Municipal Boundary
- Schedule Inset Boundary

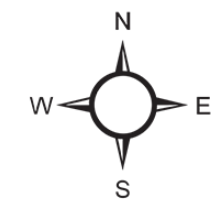
Official Plan - Designations

- ANSI (MNR)
- General Regulation Area (O. Reg. 41/24)
- ESA (Lamb Study 1979-1980)
- Significant Woodlands (LCNHS)

Area Estimator



Notes: Area Estimator generalized blocks (shown at left) are scaled to represent typical area measures.
Area Estimator is properly scaled for Main Map ONLY.
Acre area measures can be converted to hectares (ha) by dividing by (2.471).



Reference

Disclaimer: These digital mapping products have been produced on the County of Lambton's Geographic Information System. Data provided herein is derived from sources with varying levels of accuracy and currency. This is not a survey product. The County of Lambton disclaims all responsibility for the accuracy or completeness of information contained herein. The County of Lambton assumes no responsibility for errors arising from use of these digital mapping products.

The Official Plan information contained herein is current as of the last recorded amendment noted under "Official Plan Amendments".

- Cadastral database is current to November 2022.
- "General Regulation Area" refers to O. Reg. 41/24.

Projection: UTM NAD 83 Zone 17
Consultant : NPG Planning Solutions, August 2024.
COUNTY OF LAMBTON
Planning and Development Services, August 2024.
www.lambtononline.ca

