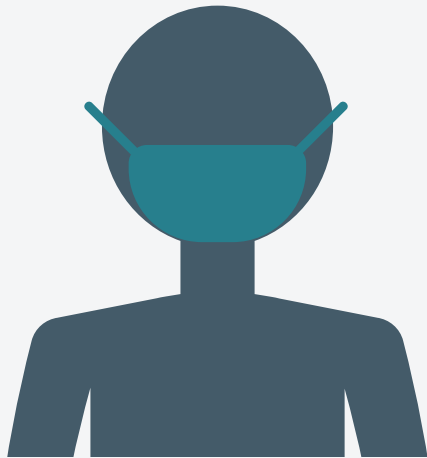




## Practise physical distancing



at all times with others  
not in your social circle



## Wear a face mask (or covering)



**Required at this location**  
due to municipal or provincial policy  
or at the request of the business owner.  
Some exemptions may apply.

Please be kind and don't judge others - some people can't wear a mask



**Lambton**  
**Public Health**

Local COVID-19 information:  
[LambtonPublicHealth.ca](https://LambtonPublicHealth.ca)