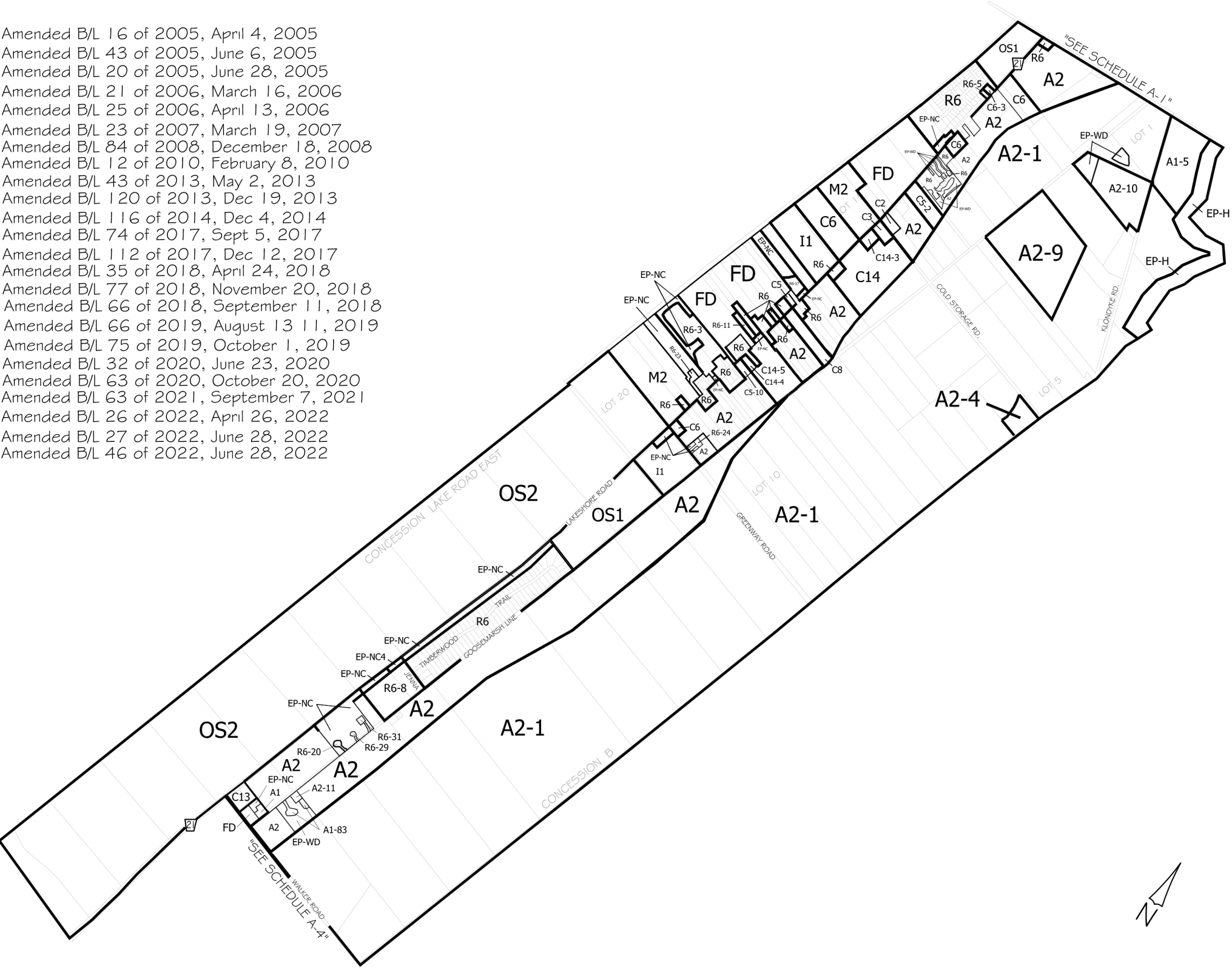


Amended B/L 16 of 2005, April 4, 2005
Amended B/L 43 of 2005, June 6, 2005
Amended B/L 20 of 2005, June 28, 2005
Amended B/L 21 of 2006, March 16, 2006
Amended B/L 25 of 2006, April 13, 2006
Amended B/L 23 of 2007, March 19, 2007
Amended B/L 84 of 2008, December 18, 2008
Amended B/L 12 of 2010, February 8, 2010
Amended B/L 43 of 2013, May 2, 2013
Amended B/L 120 of 2013, Dec 19, 2013
Amended B/L 116 of 2014, Dec 4, 2014
Amended B/L 74 of 2017, Sept 5, 2017
Amended B/L 112 of 2017, Dec 12, 2017
Amended B/L 35 of 2018, April 24, 2018
Amended B/L 77 of 2018, November 20, 2018
Amended B/L 66 of 2018, September 11, 2018
Amended B/L 66 of 2019, August 13 11, 2019
Amended B/L 75 of 2019, October 1, 2019
Amended B/L 32 of 2020, June 23, 2020
Amended B/L 63 of 2020, October 20, 2020
Amended B/L 63 of 2021, September 7, 2021
Amended B/L 26 of 2022, April 26, 2022
Amended B/L 27 of 2022, June 28, 2022
Amended B/L 46 of 2022, June 28, 2022



MUNICIPALITY OF LAMBTON SHORES
SCHEDULE "A-2"
TO BY-LAW NO. 1 OF 2003

PASSED THIS 3 DAY OF February, 2003

J.C. IVEY, MAYOR

CAROL McKENZIE, CLERK

LEGEND

SYMBOL	ZONE
A1	AGRICULTURAL - 1
A2	AGRICULTURAL - 2
C2	COMMERCIAL - 2
C3	COMMERCIAL - 3
C5	COMMERCIAL - 5
C6	COMMERCIAL - 6
C8	COMMERCIAL - 8
C13	COMMERCIAL - 13
C14	COMMERCIAL - 14
EP-H	ENVIRONMENTAL PROTECTION - HAZARD
EP-NC	ENVIRONMENTAL PROTECTION - NATURAL CONSERVATION
EP-WD	ENVIRONMENTAL PROTECTION - WOODLOT
FD	FUTURE DEVELOPMENT
I1	INSTITUTIONAL - 1
M2	INDUSTRIAL - 2
OS1	OPEN SPACE - 1
OS2	OPEN SPACE - 2
R6	RESIDENTIAL - 6
-H1,-H2..	HOLDING PROVISIONS
-1,-2..	EXCEPTIONS

SCALE:  200 0 200 400 800 METRES

PREPARED BY:
COUNTY OF LAMBTON
PLANNING AND DEVELOPMENT DEPARTMENT
FEBRUARY, 2003