

WHAT'S INSIDE: MAPS • LOCAL EVENTS • RECOMMENDATIONS & MORE



LIVE LOVE LOCAL
YOUR GUIDE TO VISITING &
LIVING IN LAMBTON SHORES

WELCOME TO LAMBTON SHORES

GREETINGS FROM THE MAYOR

On behalf of Council, and everyone that contributes to our community, I hope you find this Community Guide both interesting and helpful.

This guide will highlight the broad range of activities and facilities available within Lambton Shores, as well as a cross section of our vital community groups and organizations.

If you are looking to become more involved in your community, this guide should give you a great place to start...If you are just visiting or passing through, this guide should help make your Lambton Shores experience as fulfilling as you could wish!

I invite you to **live, love and be local**. Discover exactly why Lambton Shores is the place to be!



Sincerely,
Bill Weber, Mayor
Municipality of Lambton Shores



WHAT'S INSIDE

About the Area	4
Community Snapshot	5
Our History	6
First Nations	7

THINGS TO DO

Top Ten To Do's	9
Lifestyle Activities	10
Shop Local	11
Festivals & Events	12

THINGS TO SEE

Arts & Culture	15
Beaches	17
Marinas	18
Provincial Parks	20
Conservation Areas	21
Trails	22

ONCE YOU GET HERE

Community Maps	25
Trip Essentials	31

LIVING HERE

Places of Worship	33
Childcare	35
Education	36
Libraries	37
Community Centres	38
Health Centres	39
Garbage & Recycling	40
Utilities	41

GETTING ACTIVE

Event Planning	43
Volunteering	44
Golf	46
Recreation Services	47
Community Groups	51
Youth Groups	61
Legions	62
Other Non-Profit Groups	63

LAMBTON SHORES
ABOUT THE AREA

Lambton Shores... *Live, love, local!*

Lambton Shores is comprised of expansive beaches, popular campgrounds, parks, cycling, hiking and cross-country ski trails, indoor and outdoor theatres, rural farms, and marketplaces. Historic towns and villages are a shopper's delight, while naturalists enjoy the area for the abundance of wildlife, birds, and butterflies found in the Pinery Provincial Park, Port Franks Wetlands and Forested Dunes, and along the many nature trails. The Lambton Heritage, Arkona Lions, and Forest Lambton Museums tell the stories of our past.

To Sarnia	56 km / 35 mins
To London	67 km / 47 mins
To Windsor	197 km / 135 mins
To Toronto	274 km / 165 mins
Highway 402	24 km
Chris Hadfield Airport	49 km
London International Airport	75 km
Detroit Airport	193 km
Pearson Airport	254 km

**Distances based on a central location within Lambton Shores*



LAMBTON SHORES COMMUNITY SNAPSHOT

HOW YOUR TAX
DOLLARS GO
BACK INTO YOUR
COMMUNITY
2017 Tax Year



10,631
POPULATION



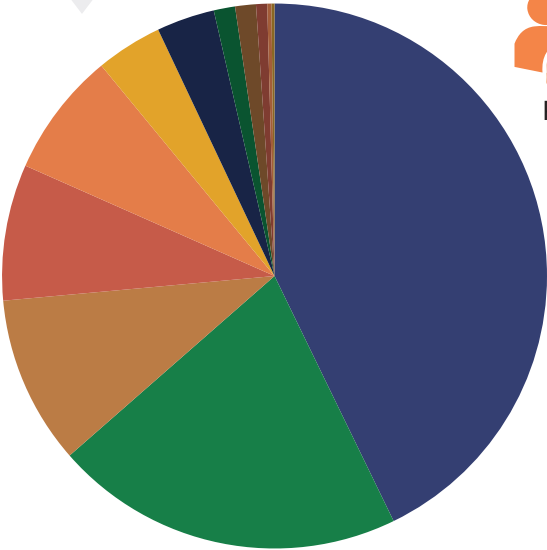
331.20 km²
TOTAL AREA



7,008
PRIVATE DWELLINGS
Within the community.



32.1/km²
POPULATION DENSITY



Economic Development

Tourism, agriculture, and manufacturing are the leading drivers of our economy. With the sandy beaches of Lake Huron, the Oak Savanna Forest of the Pinery Provincial Park, and scenic Rock Glen waterfall, Lambton Shores is a picturesque community that draws many tourists. The Village of Grand Bend, famous for its sunsets, hosts a large variety of visitor accommodations and is an area of active growth. The community of Forest is a major service centre for the surrounding community, as well as a central commercial area and home to a cluster of industrial manufacturing companies. In the north, agriculture and tourism are the focus of economic activity. The bog areas near Grand Bend, Bosanquet, and Thedford grow specialty crops such as potatoes, celery, and cooking onions as well as traditional field crops such as corn, soybeans and winter wheat.



Lambton Heritage Museum collection, AC.019.001.pstcrd



Lambton Heritage Museum collection, BJ-28A 24



Lambton Heritage Museum collection, BB.005.001.pstcrd

Our History

Lambton Shores was incorporated in 2001 by the amalgamation of Arkona, Bosanquet, Forest, Grand Bend, and Thedford, and occupies approximately 331 square-kilometres in northeast Lambton County along the shores of Lake Huron. We are home to approximately 10,600 full-time residents and have an influx of campers and cottagers who call Lambton Shores their home away from home in the summer months.

DID YOU KNOW?

INTERESTING FACTS

During the 1950s huge changes were underway in Bosanquet Township that continue to affect the local land and people. In 1937 Dr. Gordon Hagmeier bought the land containing Lake Smith, a shallow lake located behind what is now Pinery Provincial Park. With an abundance of ducks and migrating birds, Hagmeier soon began inviting his friends to go hunting on Lake Smith. One version of the story goes that, after the Department of Lands and Forests charged him with violating seasonal hunting regulations, a frustrated Hagmeier decided to drain the lake. Canals, ditches, and pumps were built in the 1950s and to this day keep water levels low and rich farmland exposed. The black bog soil that Hagmeier cultivated soon attracted a host of market gardeners planting and harvesting crops like celery, potatoes, onions, and peppermint.

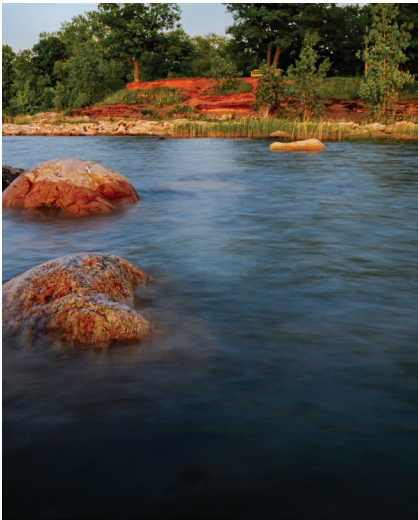
Historical stories and photos shared by the Lambton Heritage Museum.

Chippewas of Kettle and Stony Point First Nation

One of Lambton Shores neighbours are the Chippewas of Kettle and Stony Point First Nation. The community has 2,500 members with 1,000 members living on the First Nation and 1,500 residing in urban regions. Both Lambton Shores and the Chippewas of Kettle and Stony Point have been working together to strengthen the region and build a network of residents and visitors committed to inclusion and innovation.

Kettle Point is named for its unusual spherical rock concretions that protrude from the underlying shale beds along the shore of Lake Huron. These rock formations known as “kettles” are unique to only three locations in the world.

Kettle Point has many local attractions including the “kettles”, beach, golf course, shopping plaza, veteran’s memorial & annual Powwow.



GO ON, GET OUT THERE.

THINGS TO DO

IN LAMBTON SHORES



THINGS TO DO TOP TEN LIST



With a wide array of activities and natural attractions, Lambton Shores offers so much to do for day-trips, vacations or even a quick jaunt into your own community!





GOLFING

Lambton Shores has various courses to suit different skill levels. Because of the unique terrain of the region, you will find the landscape challenging at times, but always easy on the eyes. Reserved tee-off times are recommended for courses. See page 46 for more information.

TRAILS

We invite you to explore the nature trails of Lambton Shores. Enjoy the vistas, the sounds, the smells, and the feeling of our community. Come see what nature has to offer - sand dunes, Carolinian Forest, waterfalls, flowers, plants, wildlife, and so much more. There is something new waiting to be discovered! See page 22 for more details.

HORSEBACK RIDING

With several farms throughout the area, horseback riding is an ideal activity for the whole family.

DINING

Explore the culinary gems throughout Lambton Shores and you might just find a new go-to spot!

THINGS TO DO LIFESTYLE ACTIVITIES

PARASAILING & WATERSPORTS

Beaches offer ample opportunity to take advantage of the waves! There are local businesses available to help you prepare for your adventure.

BIRDING

The tundra swans make their way through Lambton Shores each season, and songbirds thrive in the forest and field areas. In addition, some predatory birds, like Bald Eagles, have been spotted throughout the area year-round.

FISHING

Lambton Shores has many great places for fishing. Lake Huron and its rivers satisfy the serious angler. Smaller ponds, rivers and the Provincial Park are the perfect location for a relaxed family fishing outing.



The year-round and seasonal businesses within Lambton Shores will cater to your every need. Local businesses supply everything from groceries to gifts, as well as many services! Take the time to get to know the shops in your community.

10 REASONS TO SHOP LOCAL

1 More money stays in the community.

Local businesses often purchase from other local businesses, which helps strengthen the local economy.

2 Supporting local, one-of-a-kind businesses helps maintain the distinctive character of the community, making it a great place to live, and to visit!

3 Local ownership ensures that important decisions are made by people who live in the community and will feel the impact of those decisions.

4 You can develop a relationship with your local merchants. They will get to know you, make personalized recommendations, and better respond to your needs.

5 Local merchants care about and invest in the community. Many local business owners live in the community and want to contribute to its future.

6 Local community groups often receive greater support from local businesses compared to non-locally-owned companies.

7 Buying local supports local jobs, and the success of local businesses attracts new entrepreneurs and skilled workers to the community.

8 Local shops are more accessible for everyone. This is especially important for elderly, vulnerable, and young people, and those without transportation.

9 You save money and time by shopping closer to home. You spend less on gas and save time by travelling a shorter distance to shop.

10 You reduce your environmental impact by making shorter trips to local stores, compared to driving to the big-box stores in the city.

PICK 3, SPEND 50. SUPPORT YOUR LOCAL ECONOMY.

THE 3/50 PROJECT

3 What are 3 local businesses you would miss if they disappeared? Stop in, say hello. Pick up something that makes you smile. Your purchases will keep those businesses around.

50 If half of the employed population spent \$50 each month in locally owned independent businesses, it would generate substantial revenue for the community and keep jobs alive.

Lambton Shores plays host to many community events, festivals and activities throughout the year. Keep an eye on our website, **lambtonshores.ca**, for up-to-date listings of what is happening in the region. Below are just a handful of annual events within Lambton Shores.

JANUARY

CROSS-COUNTRY SKIING & OTHER WINTER ACTIVITIES
Pinery Provincial Park (Grand Bend)

INTERNATIONAL SILVER STICK
Shores, Legacy, Watford arenas

FEBRUARY

PINERY FAMILY DAY WEEKEND
Pinery Provincial Park (Grand Bend)

MARCH

RETURN OF THE TUNDRA SWANS
Thedford Bog (Grand Bend)

PAINT ONTARIO
Lambton Heritage Museum (Grand Bend)

IPPERWASH MAPLE SYRUP FESTIVAL
Ipperwash: Williamson Farms (7739 Lakeshore Rd.) / Silver Birches Campground (9537 Army Camp Rd.), Thedford: Legacy Centre

THINGS TO DO FESTIVALS AND EVENTS

APRIL

EASTER IN THE PARK
Thedford, Port Franks Community Centre, Rotary Civic Park (Forest)

MAY

PINERY ANTIQUE FLEA MARKET
Sundays, May to October (Grand Bend)

MIGRATION WEEKEND
Pinery Provincial Park (Grand Bend)

GRAND BEND FARMERS' MARKET
Wednesdays, May to October, The Colonial parking lot (Grand Bend)

FOREST FARMERS' & ARTISANS' MARKET
Fridays, May to October, King St. (Forest)

THE BACK DOOR SALES EVENT
King St. (Forest)

LAMBTON FILM & FOOD FESTIVAL
King St. (Forest)

SPRING FLING DAY
King St. (Forest)

ARTS, EATS & BEATS
Grand Bend & Port Franks

JUNE

SUMMER THEATRE PRODUCTIONS
Huron Country Playhouse (Grand Bend)

FOREST KIWANIS BIKE RODEO
The Shores Recreation Centre (Forest)

BEACHFEST
Grand Bend Main Beach

ARKONA FUNTASTIC DAY
Utter Ball Park (Arkona)

JULY

CANADA DAY CELEBRATIONS & FIREWORKS

Grand Bend Beach and Esli Dodge Conservation Area (Forest)

FAMILY FISHING WEEK

Pinery Provincial Park (Grand Bend)

SUMMER SUNSET SOUNDS CONCERTS

Sundays, Rotary Community Stage (Grand Bend Beach)

FAMILIAR FAVOURITES SUNSET CONCERT SERIES

Wednesdays, Rotary Community Stage (Grand Bend Beach)

AUGUST

ANNUAL WESTERN ONTARIO STEAM THRESHERS FESTIVAL

Forest Fairgrounds (Forest)

THEDFORD FUNION DAYS

Thedford

KIDS DAY & MARKET EVENT

King St. (Forest)

DISCOVERIES THAT MATTER TOUR

Throughout Lambton Shores

SEPTEMBER

AUTUMN INDULGENCE

Huron Country Playhouse (Grand Bend)

FOREST FALL FAIR

Forest Fairgrounds (Forest)

OCTOBER

THANKSGIVING MARKET & SIDEWALK SALE

Grand Bend

LAMBTON FALL COLOUR & CRAFT FESTIVAL

Lambton Heritage Museum (Grand Bend) & Legacy Recreation Centre (Thedford)

PINERY FALL CLASSIC RUN/WALK

Pinery Provincial Park (Grand Bend)

HALLOWEEN WEEKEND AT THE PINERY

Pinery Provincial Park (Grand Bend)

NOVEMBER

LIGHT UP GRAND BEND

Optimist Park (Grand Bend)

OLD FASHIONED CHRISTMAS WEEKEND

King St. (Forest)

KIWANIS SANTA CLAUS PARADE

King St. (Forest)

CHRISTMAS COMES EARLY

Grand Bend, Forest

GRAND BEND HOLIDAY HOME TOUR

Grand Bend

DECEMBER

CHRISTMAS BIRD COUNT

Pinery Provincial Park (Grand Bend)

THEDFORD SANTA CLAUS PARADE

Thedford

For a complete listing of all community events, please visit lambtonshores.ca to see the Community Events Calendar.



IT'S ADVENTURE TIME.

THINGS TO SEE

IN LAMBTON SHORES





MUSEUMS

ARKONA LIONS MUSEUM

8680 Rock Glen Road, Arkona

☎ 519-828-3071 or 519-235-2610

🌐 lambtononline.ca

The Arkona Lions Museum and Information Centre houses an impressive collection of Devonian Era fossils and First Nations artifacts found in the local area.

FOREST LAMBTON MUSEUM

8 Main Street North, Forest

☎ 519-786-3239

🌐 lambtononline.ca

The collection at the Forest Lambton Museum includes local artifacts, pictures and documents, an extensive doll collection, flax production display, early local telephone, electrical and railway exhibits, Excelsior Band memorabilia and more.

LAMBTON HERITAGE MUSEUM

10035 Museum Road, Grand Bend

☎ 519-243-2600

🌐 lambtonmuseums.ca

The Lambton Heritage Museum is home to more than 25,000 artifacts and 10,000 photographs depicting the history of Lambton County.

THEATRES

HURON COUNTRY PLAYHOUSE I & II

RR1, 70689 B Line, Grand Bend

☎ 519-238-8387 or

1-855-372-9866

🌐 huroncountryplayhouse.com

The spacious 650-seat main auditorium and the 160-seat Playhouse II are both air-conditioned and wheelchair accessible.

KIWANIS KINETO THEATRE

24 King Street West, Forest

☎ 519-786-2303

🌐 kineto.ca

The Kineto offers the finest in movie entertainment with a small town appeal. The theatre is operated by the Kiwanis Club of Forest, as a non-profit venture.

THE FOREST AMPITHEATRE

Esli Dodge Conversation Area

88 Main Street South, Forest

☎ 519-243-1400

Hillside seating capacity is over 6,000 people. Featuring a man-made lake, picnic shelter and tables, and walking trails.

STARLITE DRIVE-IN

36752 Crediton Road, Grand Bend

☎ 519-238-8344

🌐 starlitedriveintheatre.com

Concession stand and washroom facilities. Free overnight parking and camping on request. Open seasonally.

Lambton Shores is home to many talented artists and artisans. Their work is displayed in a variety of settings, including home studios. Visit **grandbendtourism.com** or **ontbluecoast.com** for an up-to-date listing of local artists.



STUDIOS & GALLERIES

ART BY 3 STUDIO

7710 Clayton Street, Port Franks

📞 artby3.com

📞 519-243-3321

BAILLIE'S PICTURE FRAMING

22 - 81 Crescent, Grand Bend

📞 bailliespictureframing.

wordpress.com

📞 519-238-1472

BLISS STUDIO

7617 Riverside Drive, Port Franks

📞 519-243-3598

GLASS IN MOTION

17 Main Street West, Grand Bend

📞 glassinmotion.ca

📞 226-271-5134

GRAND BEND ART CENTRE

16 Municipal Drive, Grand Bend

📞 gbartcentre.com

📞 519-872-7824

THINGS TO SEE

ARTS AND CULTURE

JOSY HILKES BRITTON

9922 Pinetree Court, Huron Woods,
Grand Bend

📞 josybritton.com

📞 519-238-6036

PUCK MERKIES FINE ART STUDIO

10350 Lakeview Avenue, Grand Bend

📞 519-238-8759

RICHMAN GALLERY

30 Alberta Street, Grand Bend

📞 huronart.com

SUNSET ARTS GALLERY

63 River Road, Grand Bend

📞 sunsetarts.info

📞 519-238-6914

TREEHAUS CANADA STUDIO

Grand Bend

📞 treehauscanada.ca

📞 226-678-5118

VICTOR ALDERSON GALLERY

14 Main Street West, Grand Bend

📞 victoralderson.com

📞 226-927-7508





Beautiful sandy beaches along the fresh, clear water of Lake Huron and breathtaking sunsets make for special summers in and around Lambton Shores. Whatever your idea of summer fun is, you'll find it here.

GRAND BEND BEACH

90 Main Street West, Grand Bend

- Owned and operated by the Municipality of Lambton Shores
- Blue Flag designated beach
- Lifeguards
- Beach house features an upper observation deck, washroom and concession, elevator access to the observation deck
- Paid parking
- Shopping and restaurants nearby
- Accessible splash pad
- Accessible playground equipment
- Shade areas
- Boardwalk
- Gazebo
- Beach volleyball courts

IPPERWASH BEACH

- Unsupervised
- Parking, public washrooms and picnic areas off of East Parkway and West Parkway





Sailing and boating enthusiasts can find everything they need at Port Franks Marina and Grand Bend Marina, which are open from the Victoria Day weekend to Thanksgiving weekend. Both the Grand Bend Marina and Port Franks Marina have been awarded Blue Flag status every year since 2009.

MUNICIPAL MARINAS

GRAND BEND MARINA

91 River Road, Grand Bend

lambtonshores.ca

☎ 519-238-2000

PORT FRANKS MARINA

7574 Biddulph Street, Port Franks

lambtonshores.ca

☎ 519-243-2354

PRIVATE MARINAS

CEDAR COVE MARINA

5165 Cedar Point Line, Forest

☎ 519-786-6841

LIGHT HOUSE MARINE

7604 Biddulph Street, Port Franks

☎ 519-243-2701

PUT IN COVE

7625 Biddulph Street, Port Franks

☎ 519-243-0700

R&R MARINA

9340 Lakeshore Road, Forest

☎ 519-786-5604

SEVEN WINDS MARINA

7572 Biddulph Street, Port Franks

☎ 519-243-3433

BEACHES & MARINAS

BLUE FLAG



Blue Flag is a highly respected and internationally recognized eco-certification. Blue Flags are awarded to beaches and marinas that meet strict criteria for water quality, environmental education, environmental management, safety, and services. Out of the 27 beaches and 8 marinas in Canada with Blue Flag status, 3 are located in Lambton Shores – the Grand Bend Beach, Grand Bend Marina, and Port Franks Marina.

The Blue Flag means the beach or marina is clean and accessible, has great water quality, meets high safety standards, and is working to protect local shorelines and ecosystems.

 blueflag.global

WATER QUALITY. The Blue Flag program requires that beaches achieve excellent bathing water quality. The beaches undergo regular water testing measured against national standards and legislation. For marinas, the water must be clean without any evidence of pollution.

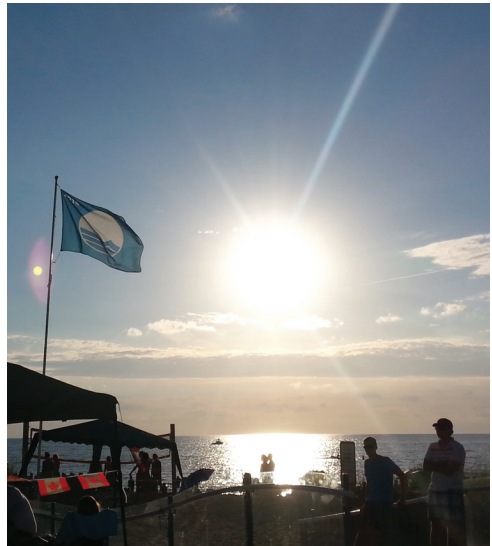
SAFETY AND SERVICES. Blue Flag sites are required to be safe and accessible for all ages and for people with disabilities. Lifeguards or lifesaving and first aid equipment must also be available at the beach. Emergency and safety measures must be in place to protect the users of the Blue Flag site.

ENVIRONMENTAL MANAGEMENT.

Dedicated beach management committees are set up at Blue Flag sites to conduct environmental audits of the site and its facilities. The committee is also responsible for ensuring that beach habitat is protected and managed sustainably. Marinas must have an environmental policy and plan in place.

ENVIRONMENTAL EDUCATION.

Educational activities that promote sustainability are organized at Blue Flag sites. The activities can range from educational signage to training workshops for municipal staff.



ONTARIO PARKS

Ontario Parks is committed to providing world-class recreational opportunities to visitors at reasonable and competitive prices. Visit the Ontario Parks website for a comprehensive listing of the provincial parks in Ontario.

☎ 1-800-ONTARIO
🌐 ontarioparks.com

PINERY PROVINCIAL PARK

9526 Lakeshore Road RR2,
Grand Bend

☎ 519-243-2220 (General
Inquiries);
519-243-8574 (Visitor Centre);
519-243-1521 (Friends of the
Pinery)

🌐 pinerypark.on.ca

Pinery Provincial Park is one of the largest and most unique natural areas in South Western Ontario. The Park welcomes thousands of visitors each year and is open year-round so that all may enjoy the beauty each season has to offer. Features of Pinery Park include:

- 6,330 acre park which is the largest protected forest in Southwestern Ontario
- 757 plant, 319 bird and 60 butterfly species
- Globally rare Oak Savanna ecosystem
- Freshwater coastal dunes
- Habitat for endangered species
- 10 km of beach, 10 nature trails and 38 km of ski trails

THINGS TO SEE

PROVINCIAL PARKS



- Hiking, bicycling, canoeing, kayaking, fishing, hydrobiking (rentals available), cross country skiing, snowshoeing and tobogganing
- Birding
- National Geographic has described this area as having one of the “Top Ten Best Sunsets” in the world
- Natural Heritage Education—The best way to discover Pinery is through the park’s extensive interpretive programs for visitors—bike hikes, evening programs, and conducted walks
- One of the largest year-round interpretive programs in Ontario
- Wheelchair accessible general store and restaurant
- Year-round Visitor Centre and Friends of Pinery Park Nature Gift Store
- 1,000 campsites and 12 yurts available for rental
- Accessible ramps to the beach

CONSERVATION AUTHORITIES

Lambton Shores falls within two conservation area zones: north of Port Franks under the Ausable Bayfield Conservation Authority and south of Port Franks under the St. Clair Region Conservation Authority. The Conservation Authorities implement programs to reduce the risk to life and property from flooding and erosion; water and land stewardship; forestry; wildlife habitat creation and outdoor recreation.

CONSERVATION AREAS

AUSABLE RIVER CUT CONSERVATION AREA

9984 Northville Crescent,
Lambton Shores

☎ 1-888-286-2610

(Administrative Centre)

🌐 abca.on.ca

One of the last remaining public rest stops for travellers on the Bluewater Highway. Walkers can enjoy a stroll on the nature trail through this forested area within the Carolinian Zone.

ESLI DODGE CONSERVATION AREA

88 Main Street South, Forest

☎ 519-243-1400 (Rentals)

The scenic area is ideal for family picnics and weddings. Theatre and concert events have utilized the area's outdoor amphitheatre design. Newly constructed tennis courts available for public use.



ROCK GLEN CONSERVATION AREA

8680 Rock Glen Road, Arkona

☎ 519-828-3071 (Gatehouse);

1-888-286-2610

(Administrative Centre)

🌐 abca.on.ca

Rock Glen Conservation Area is a unique park owned and maintained by the Ausable Bayfield Conservation Authority. There are many beautiful sights to take in, whether you are hiking along the Ausable Gorge or through the Carolinian Forest, there is something for the entire family to enjoy at the Rock Glen Conservation Area.

- Arkona Lions Museum and Information Centre, which houses an impressive collection of Devonian Era fossils and First Nations artifacts found in the local area
- The breathtaking 10.7 meter-high waterfall is the park's most popular feature
- Trails, boardwalks and a scenic lookout
- Visitors can explore for fossils in the exposed beds at the bottom of Rock Glen Falls
- Public washrooms
- Two picnic pavilions available for reservation
- The lookout, washrooms, museum, and some trails are wheelchair accessible
- Guided and educational hikes are available

NATURE TRAILS

LAMBTON SHORES NATURE TRAILS (LSNT)

📍 lsntblazers.com

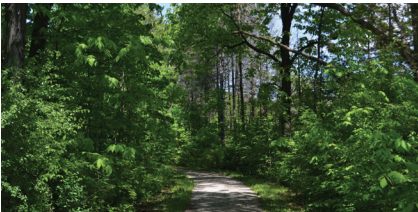
LSNT maintains 30 kilometers of nature trails on approximately 1,200 acres of environmentally significant land in Lambton Shores and vicinity, beyond the boundaries of the treasured Pinery Provincial Park and Rock Glen Conservation Area.

- Trail routes have been established, cleared and blazed
- Roadside signs, trailhead signs and on-trail signs have been installed
- ATV trails have been closed to prevent further destruction of fragile natural areas
- Benches have been placed along some of the trails
- A wheelchair accessible lookout platform has been constructed in the Ausable River Cut Conservation Area

LAMBTON COUNTY TRAILS

📍 lambtoncountytrails.com

The County of Lambton has developed a trails GIS mapping system which allows the public to access information on local trails through the internet. Available information includes trailheads, lookout points, trail distances, nearby amenities, etc.



THINGS TO SEE

TRAILS

FOREST WALKWAY TRAIL

📍 lambtonshores.ca/parks-trails

A 2.8 km asphalt walking and cycling trail linking Rotary Civic Square with Esli Dodge Conservation Area.

GRAND BEND ROTARY TRAIL

📍 lambtonshores.ca/parks-trails

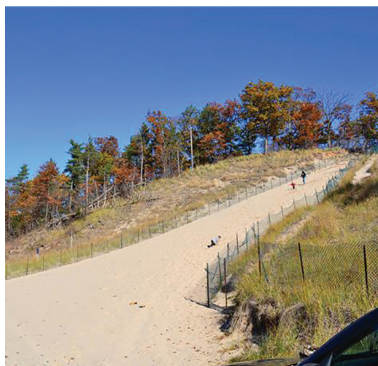
A 9 km trail extending from Pinery Park to Grand Bend along the Highway 21 corridor.

WATERFRONT TRAIL

📍 waterfronttrail.org/Lambton-Shores
Stretching over 1,400 km along the Canadian shores of Lake Ontario, Lake Erie, Lake St. Clair, Lake Huron, and the Niagara, Detroit and St. Lawrence Rivers, the Waterfront Trail connects 68 communities and over 405 parks and natural areas including wetlands, forests and beaches. The trail is comprised of country roads with shoulders in place in most cases (8 km), Neighbourhood roads (16 km), and the Rotary Trail from Pinery to Grand Bend Beach (9 km).

Visit lambtongis.ca for a interactive map to plan your trail route.





SPECIES AT RISK

While out on the trails, stay on the designated paths to ensure you don't enter protected areas or disturb species of concern.

Lambton Shores is home to unique habitats including bare and forested dunes, freshwater coastal wetlands, rare Oak Savanna, and Carolinian forests. Along with these unique habitats are an abundance of flora and fauna that call the area home.

There are many plant and animal species that are at risk throughout Lambton Shores. In the coastal areas, dune grass is threatened by erosion. Informational signage is posted in these areas, and re-introduction efforts are being made.

Lambton Shores is also home to many endangered and threatened species including the five-lined skink, rusty patched bumble bee, several species of bats, and several species of fish including the pugnose shiner and lake chubsucker.

What can you do to help when you are out on the trails?

- Stay on marked paths
- Be respectful and leave the trail as you found it
- Never feed, chase, or harass wildlife
- Adhere to permitted trail uses and activities.



Five-Lined Skink

YOU'RE ALWAYS WELCOME.

ONCE YOU GET HERE

IN LAMBTON SHORES



MAP ARKONA

FACT DID YOU KNOW?

In the summer of 1910 the Arkona Women's Institute held their first picnic. The picnic grew out of a movement that started when Adelaide Hunter Hoodless spoke to a meeting of farmers' wives in Stoney Creek, Ontario. Out of that meeting came the first Women's Institute, and within ten years, more than 500 Women's Institutes had been organized across Canada. The Women's Institute, an organization for personal growth and community involvement, is still active in Lambton County today!



ONCE YOU GET HERE TO LAMBTON SHORES



LEGEND

- 1) Utter Park
- 2) Arkona Fairways Golf Course
- 3) Rock Glen Conservation Area
Arkona Lions Museum and Information Centre
- 4) Arkona Senior's Centre
- 5) Arkona Community Centre
Arkona Community Centre Park
Arkona Library
Kaeden's Splash Pad

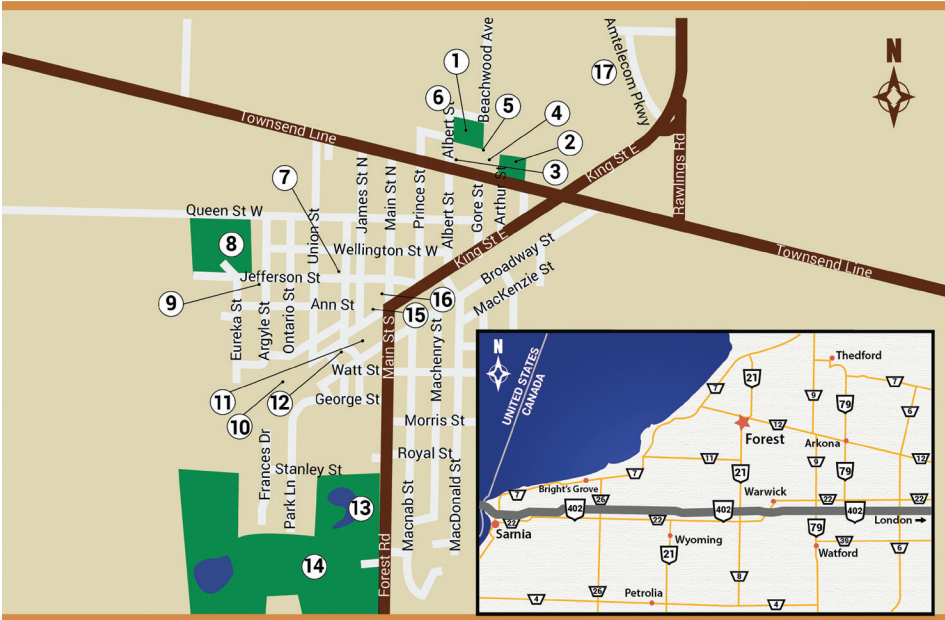
FACT
DID YOU KNOW?

Entertainment in Forest is synonymous with the name Rumford, a local family who originally owned a bakeshop in the town around the turn of the century. In 1917 Marty and Tom Rumford purchased the present theatre at 24 King St. and called it the Kineto, a name taken from the brass equipment used to pull film up on projectors. In 1977, the Kiwanis Club of Forest purchased the theatre and completed major renovations in 1981 and 2012.

MAP
FOREST



Lambton Heritage Museum collection



LEGEND

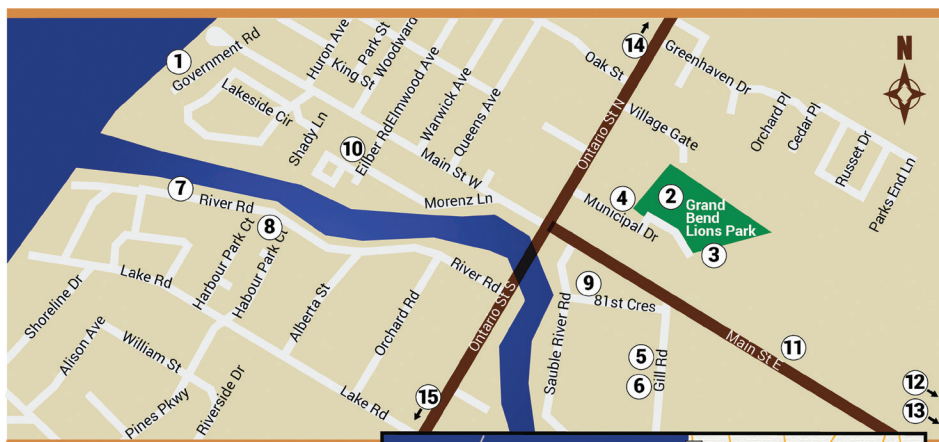
- | | | |
|-----------------------------------|---------------------------------------|------------------------------------|
| 1) Coulitis Park | 7) Whyte Park | 13) Esli G Dodge Conservation Area |
| 2) McRae Park/Shipley's Grove | 8) Forest Fairgrounds | 14) Forest Golf and Country Hotel |
| 3) Forest Lawn Bowling Club | 9) Pleasure Park | 15) Kineto Theatre |
| 4) Kimball Hall | 10) Forest X-Park | 16) Forest Lambton Museum |
| 5) Forest Curling and Social Club | 11) Forest Walkway Trail (start) | 17) The Shores Recreation Centre |
| 6) Royal Canadian Legion Br. 176 | Rotary Civic Square (Spray Pad) | |
| | North Lambton Community Health Centre | |
| | 12) Forest Library | |

Lambton Heritage Museum collection, BD.011.021.pstord



FACT DID YOU KNOW?

When the Lakeview Casino opened its doors for the first time in the summer of 1919, a tradition of live musical entertainment began that would endure for the next five decades. Dancing and live music were staples of the Casino and the likes of Louis Armstrong, the Glenn Miller Orchestra, Rudy Vallee, the Lombardos, Gordie Tapp, Stan Patton, Juliet Lionel Thornton and Tommy Dorsey all played at Grand Bend.



LEGEND

- 1) Grand Bend Beach
- 2) Grand Bend Lions Park
- 3) Royal Canadian Legion Br. 498
- 4) Grand Bend Art and Youth Centre
- 5) Grand Bend Recreation Centre
- 6) Grand Bend Library
- 7) Grand Bend Marina
- 8) Sphere Park
- 9) Optimist Park
- 10) Eilber Park
- 11) Grand Bend Area Comm. Health Centre



- 12) Grand Bend Motor Plex
- 13) Huron Country Playhouse
- 14) Oakwood Inn Resort
- 15) Lambton Heritage Museum

FACT
DID YOU KNOW?

In the spring of 1929 a dance hall was erected on the beach in Ipperwash to compete with the neighbouring holiday town of Grand Bend. Col. Duncan Ross and the Ovens brothers of Ailsa Craig ran the exclusive night spot that featured a spacious dining room and regular performances by big bands. The casino was a popular place for live music, dancing, or to stroll around the open air deck and listen to the waves rolling in off Lake Huron.

In August 1968, just at the close of the evening, Ipperwash Casino burned to the ground. Bert Sims, the owner of the property since 1959, chose not to rebuild.

MAP
IPPERWASH BEACH



Lambton Heritage Museum collection





FACT DID YOU KNOW?

The Great Storm of 1913 was the deadliest and most destructive storm to ever hit the Great Lakes. The storm raged between November 7th and November 10th. Dozens of cargo ships eager to deliver their goods before winter arrived were either destroyed or grounded by the force of the storm. One of the ships caught in the storm was the Northern Queen. Although the ship was close to land, massive waves prevented the crew from escaping for two days.



LEGEND

- | | |
|---|---------------------------------|
| 1) Port Franks Community Centre | 8) Sand Hills Golf Resort |
| 2) Port Franks Library | 9) Ausable River Cut CA |
| 3) Lambton County Heritage Trail Access | 10) Pinery Provincial Park |
| 4) Port Franks Marina | 11) Rotary Trail System (start) |
| 5) Port Franks Forest Dunes Trail | |
| 6) Port Franks Sand Dunes | |
| 7) 'L' Lake Nature Trail (Trail Head) | |



FACT
DID YOU KNOW?

The community began in the 1860s when farmer Nelson Southworth, a native of Vermont, agreed to donate land for the construction of a Grand Trunk Railway station, with the condition that he would be able to name it. Southworth chose the name “Thetford”, as a way of honouring Thetford, Vermont. A local clerk’s poor handwriting was mistaken for the current spelling, which is how it first appeared on official records.

MAP
THETFORD



Lambton Heritage Museum collection, BE-98.74



LEGEND

- 1) Legacy Recreation Centre and Park
- 2) Widder Station Golf & Country Club
- 3) Thetford Village Complex
- 4) Thetford Village Green
- 5) Thetford Library
- 6) Royal Canadian Legion Br. 278



GROCERY STORES

In addition to the abundance of seasonal farm stores and roadside stands throughout Lambton Shores, there are also several large grocery suppliers in the area:

- Arkona Food Market
- Forest Foodland
- Mike & Terri's No Frills Grand Bend
- Points Preference Supermarket
- Sobey's Grand Bend

Visit ontbluecoast.com for more listings.

LODGING

Lambton Shores plays host to a wide variety of lodging options.

- Campgrounds
- Hotels & Motels
- Cottage/Apartment Rentals
- Bed & Breakfasts
- Trailer Parks

Visit ontbluecoast.com to discover where you'll be resting your head!



RESTAURANTS & BARS

The restaurants of Lambton Shores serve all kinds of cuisine including sushi, pizza, Chinese, and good ole' Canadian fare.

Check out the area online at ontbluecoast.com to discover where your next delicious meal will be!

NEWS & RADIO

Tune into the local stations and stay informed of what's going on!

- 99.9 The Fox
- 103.9 CHOK FM
- 104.9 The Beach
- 106.3 Sarnia's Best Rock
- 107.7 The Eagle

Looking for something to read at the beach? Local papers offer a glimpse into life in Lambton Shores.

- Lakeshore Advance
- The Standard Guide Advocate



WELCOME HOME.

LIVING HERE

IN LAMBTON SHORES



ANGLICAN

CHRIST CHURCH ANGLICAN

20 Main Street South, Forest

☎ 519-786-2634

ST. ANNE'S ANGLICAN CHURCH

10027 Port Franks Road, Port Franks

☎ 519-243-1418

ST JOHN'S BY-THE-LAKE ANGLICAN CHURCH

70642 Ontario Street North, Grand Bend

☎ 519-238-2489

BAPTIST

ARKONA BAPTIST CHURCH

13 Church Street, Arkona

☎ 519-828-3062

FOREST BAPTIST CHURCH

19 Prince Street, Forest

☎ 519-786-3480

🌐 forestbaptist.ca

PINERY BAPTIST CHURCH

8751 Lakeshore Road (Hwy 21),
Port Franks

☎ 519-243-2144

🌐 pinerybaptist.ca

BIBLE CHAPELS

ELIM BIBLE CHAPEL

8457 Townsend Line, Arkona

☎ 519-828-3076

🌐 elimbiblechapel.com

FOREST BIBLE CHAPEL

33 Main Street North, Forest

☎ 519-232-4314

🌐 forestbiblechapel.ca



CHURCH OF GOD

GRAND BEND CHURCH OF GOD

4 Gill Road, Grand Bend

☎ 519-238-2142

🌐 grandbendchurchofgod.org

FULL GOSPEL

GRAND BEND GOSPEL HALL

64 Ontario Street, Grand Bend

LAKESHORE GOSPEL HALL

8908 Fuller Road, Forest

☎ 519-786-4040

JEHOVAH WITNESS

JEHOVAH WITNESS KINGDOM HALL
5959 Townsend Line, Forest
☎ 519-786-6200

PENTECOSTAL

BETHEL PENTECOSTAL CHURCH
143 Anne Street, Thedford
☎ 519-296-4468

ECHOES OF FAITH
24 Prince Street, Forest
☎ 519-786-2808

PRESBYTERIAN

KNOX PRESBYTERIAN CHURCH
182 Main Street, Thedford
🌐 kpcthedford.com

ST. JAMES PRESBYTERIAN CHURCH
19 Main Street North, Forest
☎ 519-786-4522
🌐 pccweb.ca/stjamespc

ROMAN CATHOLIC

IMMACULATE HEART OF MARY ROMAN CATHOLIC CHURCH
331 Ontario Street South, Grand Bend
☎ 519-238-8556

ST. CHRISTOPHER'S ROMAN CATHOLIC CHURCH
68 Union Street, Forest
☎ 519-786-5243



LIVING HERE

PLACES OF WORSHIP

UNITED

FOREST UNITED CHURCH
21 James Street North, Forest
☎ 519-786-2514
🌐 forestunitedchurch.com

HURON SHORES UNITED CHURCH
25 Main Street, Grand Bend
☎ 519-238-2402
🌐 huronshoresunitedchurch.com

RAVENSWOOD UNITED CHURCH
7476 Lakeshore Road (Hwy 21), Ravenswood
☎ 519-786-5682

THEDFORD-SYLVAN UNITED CHURCH
Corner of Pearl Street and Nelson Street, Thedford
☎ 519-296-5657

OTHER

JUNCTION COMMUNITY CHURCH
🌐 junction.church



NORTH LAMBTON CHILDCARE CENTRE

37 Morris Street (Forest), 44 Main Street (Forest), 15 Gill Road (Grand Bend)

☎ 519-786-6161 ext. 9224

🌐 nlchildcare.ca

North Lambton Childcare Centre is a multi-service centre dedicated to providing safe, quality care, education and developmental opportunities to children and families in the community. North Lambton Childcare Centre provides an early learning and care program for children ages 3 months to 12 years.



FOREST EARLYON CHILD & FAMILY CENTRE

63 MacDonald Street (Morris Street Entrance), Forest

☎ 519-786-6161 ext. 9230

Forest EarlyON Child and Family Centre provides opportunities for children from birth to 6 years of age to participate in play and inquiry-based programs, and supports parents and caregivers in their roles. Mobile EarlyON sites are located in Thedford, Arkona and Grand Bend. Families and caregivers will find support, advice, make personal connections and have access to a network of resources.



SMALL WORLD NURSERY SCHOOL

16 Allen Street, Thedford

☎ 519-296-4454

Two and a half hour sessions are offered in both the morning and afternoon. Early Learning Program (ELP) provides up to sixteen hours of free childcare per month for residents of Lambton County between the ages of two and a half to four years, and who are not yet eligible for Junior Kindergarten. The Program is also available for children at two years of age (fees apply).

BEST START HUB, KINNWOOD CENTRAL SCHOOL

63 MacDonald Street (Morris Street Entrance), Forest

☎ 519-786-6161

🌐 ourbeststart.ca

Best Start Hubs support families with children from birth to age 6 with family drop-ins and parenting programs at the Ontario Early Years Centre. Best Start also provides direct linkages with community professionals including preschool speech and language, infant development, postpartum mood disorder and parent & baby drop-in programs.

SCHOOL BOARDS

LAMBTON KENT DISTRICT SCHOOL BOARD

200 Wellington Street, Sarnia

☎ 519-336-1500 or

1-800-754-7125

🌐 lkdsb.net

ST. CLAIR CATHOLIC DISTRICT SCHOOL BOARD

420 Creek Street, Wallaceburg

☎ 519-627-6762 or

1-866-336-6139

🌐 www.st-clair.net

ELEMENTARY

BOSANQUET CENTRAL SCHOOL

8766 Northville Road, Thedford

☎ 519-296-4962

🌐 bosanquet.lkdsb.net

Soccer field, gymnasium, classrooms

KINNWOOD CENTRAL PUBLIC SCHOOL

63 MacDonald Street, Forest

☎ 519-786-5351

🌐 kinnwood.lkdsb.net

Soccer field, gymnasium, classrooms

LIVING HERE
EDUCATION

GRAND BEND PUBLIC SCHOOL

15 Gill Road, Grand Bend

☎ 519-238-2091

🌐 grandbend.lkdsb.net

Community Room, gymnasium, classrooms

Note: For gymnasium & community room rentals, please call 519-243-1400

ST. JOHN FISHER CATHOLIC SCHOOL

44 Main Street North, Forest

☎ 519-786-5201

🌐 www.st-clair.net/SJF

Soccer field, gymnasium, classrooms

SECONDARY

NORTH LAMBTON SECONDARY SCHOOL

15-17 George Street, Forest

☎ 519-786-2166

🌐 nlss.lkdsb.net

Gymnasium, auditorium with stage, soccer field, running track, classrooms

COMMUNITY USE OF SCHOOLS

Community Use of Schools is a Ministry of Education initiative which supports access to school spaces outside of regular hours for local, non-profit community groups. Locally, the Lambton Kent District School Board and the St. Clair Catholic District School Board collaboratively endorse and encourage community use of their schools in Chatham-Kent and Sarnia-Lambton.

The two boards, working together under the umbrella of the Chatham-Kent Lambton Administrative School Services (CLASS) Agreement, support the Ministry's vision to see schools as welcoming and inclusive places for community members to come together, volunteer, build skills, access community programs, and become physically active during non-school hours.

For more information on available spaces or for rentals, please call 1-877-330-4287 or visit www.communityuseofschools.com.

PUBLIC LIBRARIES

Public Libraries are operated by the County of Lambton.

ARKONA LIBRARY

16 Smith Street, Arkona

☎ 519-828-3406

FOREST LIBRARY

61 King Street West, Forest

☎ 519-786-5152

GRAND BEND LIBRARY

15 Gill Road, Grand Bend

☎ 519-238-2067

PORT FRANKS LIBRARY

9997 Port Franks Road, Port Franks

☎ 519-243-2820

THEDFORD LIBRARY

16 Allen Street, Thedford

☎ 519-296-4459

Lambton County Headquarters

787 Broadway Street, Wyoming

☎ 519-845-3324 or 1-866-324-6912

✉ library.contact@county-lambton.on.ca

🌐 lclibrary.ca



Get to know your neighbourhood library!

Lambton County Library offers a variety of free materials and services to meet the leisure and informational needs of the community through its 26 branches, bookmobile and website. eReader lending, multimedia resources, online services, programs, and Internet access are all available. An active library card is required to borrow materials and access online services.

There are many great programs available for all ages at Lambton County Library branches including preschool and children's programs, summer reading programs, and book clubs, as well as community-led programs.

Visit www.lclibrary.ca for a complete list of programs, or call your local branch for program information. Pre-registration may be required.



For more facility information or rental information, please visit lambtonshores.ca or contact the Community Services Department at 519-243-1400.

THE SHORES RECREATION CENTRE

7883 Amtelecom Parkway, Forest

- NHL sized ice surface/concrete pad during the non-ice season
- Concrete pad capacity of 1,200
- Arena stands capacity of 700, with additional 300 standing
- Free access walking track
- Full-sized, dividable gymnasium
- Concession
- Board room with a capacity of 30
- Suncor Wellness Centre, operated by the YMCA

THE LEGACY RECREATION CENTRE

16 Allen Street, Thedford

- Full sized ice surface (180'x80') doubles as an indoor exhibition/event space
- Arena stands have combined seating and standing for 600, concrete pad capacity of 1,000
- Hall can be divided to become two multi-purpose rooms
- Thomas Hall package pricing is available
- Concession
- Bosanquet Small World Nursery School and Thedford Public Library
- Emergency Reception Centre for Thedford
- First LEED® certified building in Lambton Shores

LIVING HERE COMMUNITY CENTRES

ARKONA COMMUNITY CENTRE

16 Smith Street, Arkona

- Community Room with a capacity of 50
- Meeting room
- Facility grounds include playground
- Equipment, basketball court, spray pad, parking and a sitting area

ARKONA SENIORS CENTRE

7355 Arkona Road, Arkona

- Multi-purpose room with a capacity of 60
- Kitchen available for use
- For rentals, call the Arkona Seniors at 519-828-3409

GRAND BEND RECREATION CENTRE

15 Gill Road, Grand Bend

- Located at the Grand Bend Public School
- Gymnasium has a capacity of 200
- Community Room has a capacity of 40 and includes a small kitchen

KIMBALL HALL

6276 Townsend Line, Forest

- Community hall with a capacity of 400, and a meeting room with a capacity of 15
- Kitchen, bar area and stage available for use
- For rentals and additional details, contact the Optimist Club of Forest

THEDFORD VILLAGE COMPLEX

109 Pearl Street, Thedford

- Contains one multi-purpose room with a capacity of 70
- Includes a kitchen
- Adjacent to the Village Green Playground and Parkette

PORT FRANKS COMMUNITY CENTRE

9997 Port Franks Road, Port Franks

- Optimist Hall has a capacity of 240
- The West Wing has a capacity of 149
- The two halls can be combined to form a larger hall
- Facility grounds include plenty of green space, tennis courts, playground equipment, a soccer field, shaded sitting areas, a skateboard park, pavilion and trail heads for the Lambton County Heritage Trail System
- Emergency Reception Centre for Port Franks



LIVING HERE

HEALTH CENTRES

Health Centres are non-profit community governed organizations that provide comprehensive primary medical care and health promotion programs using multi-disciplinary teams of health providers. Health Centres are funded by the Ministry of Health and Long Term Care through the Local Health Integrated Networks (LHIN) system. Lambton Shores is part of the Erie St. Clair LHIN. Health promotion and disease prevention programs are available to everyone in our community and are usually free, low cost, or subsidized.

GRAND BEND AREA COMMUNITY HEALTH CENTRE

69 Main Street East, Grand Bend

☎ 519-238-1556 (Programs & Allied Health Services)
519-238-2362 (Primary Care)

🌐 gbachc.ca

- Weight management
- Nutrition classes
- Healthy choices & lifestyle changes
- Smoking cessation
- Exercise classes
- Heart health & cholesterol management
- Mental health programs & support groups
- Community initiative programs that address the social determinants of health

NORTH LAMBTON COMMUNITY HEALTH CENTRE

3-59 King Street West, Forest

☎ 519-786-4545

🌐 nlchc.com

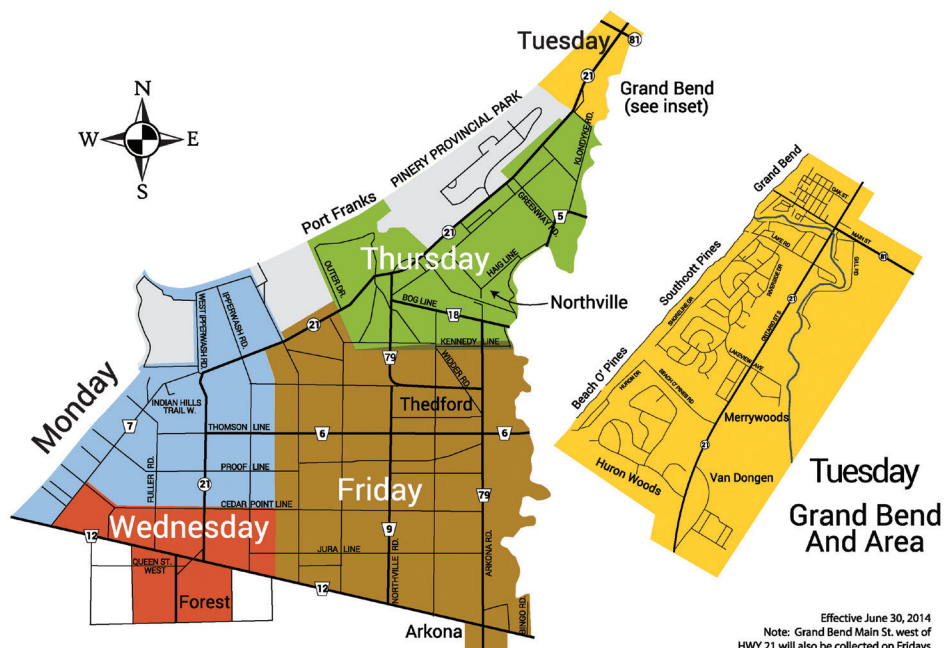
✉ nlinfo@nlchc.com

- Prenatal classes
- Afterschool programs (multiple outreach locations)
- Coffee Time
- Young at Heart Seniors dinner
- Low Impact Fun and Winter Walking programs (multiple locations)
- Garden Fresh Box



Lambton Shores

Waste and Recycling Collection Map



For more information on how to stay green, visit us online at lambtonshores.ca under Garbage, Recycling and Composting

RECYCLING – Every year the list of items that can be recycled increases. Visit the Lambton Shores website to keep up-to-date on what you can save from a landfill.

ELECTRONIC WASTE – You can bring your old TVs, computers and components to the Lambton Shores Municipal Offices in Forest or Northville, Mon-Fri, 8:30 am – 4:30 pm for no fee.

LEAF PICK-UP – Leaves can be bagged in BROWN PAPER BAGS and left by the curb for pick-up during allotted times.

COMPOSTING – Learn more about composting with www.bra.org. For wood, brush and leaves, you can visit the Lambton Shores Compost Site at 7550 Brush Road, Lambton Shores, during the operating hours listed on the Lambton Shores website.

HOW TO DISPOSE OF LARGE ITEMS – Please check your community listings to inquire if there is an organization in need of your item. Or visit the Lambton Shores website for other disposal options.



INTERNET, CABLE AND TELEPHONE

EASTLINK (Arkona, Forest, Kettle & Stony Point)

☎ 1-888-345-1111

🌐 eastlink.ca

EXECULINK (Arkona, Forest, Ipperwash, Port Franks, Thedford)

☎ 1-866-706-1994

🌐 execulink.ca

HAY COMMUNICATIONS

(Grand Bend)

☎ 1-888-831-4333

🌐 hay.net

WATER, SEWER, STORM WATER AND DRAINAGE

**MUNICIPALITY OF LAMBTON
SHORES - COMMUNITY
SERVICES DEPARTMENT**

☎ 519-243-1400 or

1-866-943-1400

🌐 lambtonshores.ca

✉ works@lambtonshores.ca

ELECTRICAL

HYDRO ONE

☎ Billing and Service Inquiries (7:30am - 8:00pm, Monday to Friday):

1-888-664-9376

☎ Report a Power Outage, Fallen Tree Hazard or Emergency (24 Hours):

1-800-434-1235

🌐 HydroOne.com

✉ CustomerCommunications@HydroOne.com

GAS

UNION GAS

☎ Billing & Service Inquiries (8:00am-6:00pm, Monday to Friday):

1-888-774-3111

☎ 24-Hour Emergency Assistance

1-877-969-0999

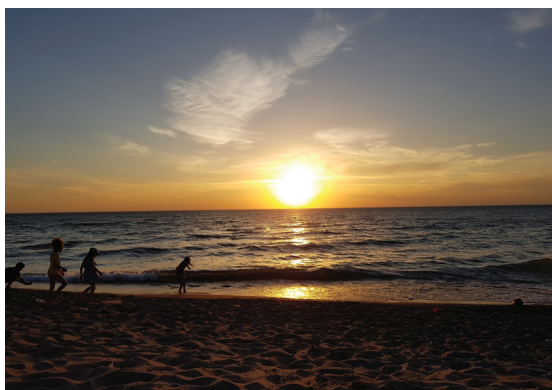
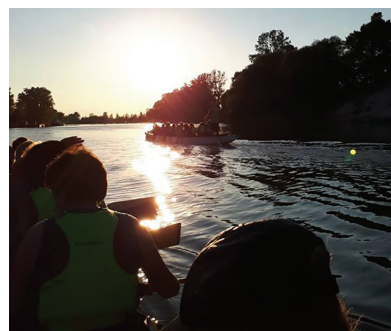
🌐 uniongas.com



LET'S BUILD A COMMUNITY.

GETTING ACTIVE

IN LAMBTON SHORES





RENTING A FACILITY

The Municipality of Lambton Shores currently rents out the following facilities and parks for events:

- Arkona Community Centre
- Thedford Village Complex
- Grand Bend Recreation Centre
- Port Franks Community Centre
- Legacy Recreation Centre
- Shores Recreation Centre
- Utter Park
- Coultis Park
- McRae Park
- Lions' Park
- Klondyke Sports Park
- Shipley's Grove
- Esli Dodge Conservation Area
- Grand Bend Beach, Observation Deck, Pavilion, or Rotary Community Stage

For more information on these facilities and their amenities, or to book a rental, call Recreation and Leisure Services at 519-243-1400 or email events@lambtonshores.ca.

POLICIES IN LAMBTON SHORES

Visit lambtonshores.ca/plan-an-event for more information or to access the policies and permits.

FINDING VOLUNTEERS

If you require local volunteers for your event, please notify Recreation and Leisure Services at 519-243-1400 for an announcement to be made through the Lambton Shores Volunteer initiative.

ADVERTISING

Please submit your event at lambtonshores.ca/events-calendar if you would like your community event to be advertised by the Municipality through our weekly newsletter or social media pages. Some restrictions do apply and the posting must be approved before it is added.





GETTING ACTIVE VOLUNTEERING

VOLUNTEER APPRECIATION AWARDS

Every year, the Volunteer Appreciation Awards are held to recognize and honour the achievements and contributions of community volunteers.

These prestigious awards express Council's appreciation of the many individuals who are helping to enhance the quality of life in Lambton Shores.

We invite you to submit nominations for those individuals and community groups whom you believe to have made a significant contribution to our community.

Award Categories:

- Accessibility
- Arts & Culture
- Environment
- Good Neighbour (3 per ward)
- Heritage
- Sports & Recreation
- Civic Awards (26 and older, 2 awards & 25 and younger, 2 awards)
- Outstanding Community Group

Nominees must live, own a business or go to school in the Municipality of Lambton Shores and demonstrate volunteer commitment in the region. *

Awards are presented at the Annual Volunteer Recognition BBQ in September of each year.

For more information, contact the Lambton Shores Community Services Department, 519-243-1400 or email events@lambtonshores.ca

*Considerations for outside residents may be made depending on contribution to Lambton Shores area



Take a look at the list of community groups presented in this guide (*pages 51-63*) to get involved today!

TOP 10 REASONS WHY VOLUNTEER?

#10: IT'S GOOD FOR YOU. Volunteering provides physical and mental rewards. It:

- Reduces stress
- Improves health

#9: IT SAVES RESOURCES. Volunteering provides valuable community service so more money can be spent on local improvements.

#8: VOLUNTEERS GAIN PROFESSIONAL EXPERIENCE. You can test out a career!

#7: IT BRINGS PEOPLE TOGETHER. As a volunteer, you assist in:

- Uniting people from diverse backgrounds to work towards a common goal
- Building camaraderie and teamwork

#6: IT PROMOTES PERSONAL GROWTH AND SELF-ESTEEM. Understanding community needs helps foster empathy and self-efficacy.

#5: STRENGTHENS YOUR COMMUNITY.

As a volunteer you can help:

- Support families (daycare & eldercare)

- Improve schools (tutoring, literacy)
- Support youth (mentoring and after-school programs)
- Beautify the community (beach and park cleanups)

#4: YOU LEARN A LOT. Volunteers gain valuable knowledge about:

- **Self:** Volunteers discover hidden talents
- **Government:** Through working with local non-profit agencies, volunteers learn about the functions and operation of their government
- **Community:** Volunteers gain knowledge of local resources available to assist in community needs

#3: YOU GET A CHANCE TO GIVE BACK. You can support community resources that you use or that benefit people you care about.

#2: ENCOURAGES CIVIC RESPONSIBILITY.

Community service and volunteerism are an investment in our community and the people who live in it.

#1: YOU MAKE A DIFFERENCE. Every person counts!

GOLF

ARKONA FAIRWAYS GOLF COURSE

8562 Townsend Line, Arkona

☎ 519-828-3211

🌐 arkonafairways.com

✉ arkonafairways@execulink.com

Arkona Fairways Golf Course offers an 18 hole, par 70 course. Golfers can benefit from golf lessons and the driving range.

FOREST GOLF & COUNTRY HOTEL

102 Main Street South, Forest

☎ 519-786-2397 or

1-800-265-0214

🌐 golfforest.ca

The 27 holes at Forest Golf & Country Hotel provides both novice and experienced golfers with an enjoyable and challenging game.

INDIAN HILLS GOLF CLUB

6991 Lakeshore Road, Lambton Shores

☎ 519-786-5505

🌐 indianhillsgolf.ca

Indian Hills Golf Club offers a challenging 18 hole, par 71 course.

OAKWOOD RESORT

70671 Bluewater Highway, Grand Bend

☎ 519-238-2324 or

1-800-387-2324

🌐 oakwoodresort.ca

✉ oakwood@oakwoodresort.ca

Oakwood Resort provides golfers with an 18 hole, par 70 course, power and pull carts are available for rental.

GETTING ACTIVE

GOLF

OUR PONDEROSA RV & GOLF RESORT

9338 West Ipperwash Road

☎ 519-786-2031 or 1-888-786-2267

Our Ponderosa offers golfers a 9 hole, par 33 course within 1,964 yards.

Power and pull carts are available for rental. Other services available at Our Ponderosa includes camping, general store and more.

SAND HILLS GOLF RESORT

9767 Port Franks Road, Thedford

☎ 519-243-1800

🌐 golfsandhill.ca

Sand Hills Golf Resort offers an 18 hole, par 71 course that is ideal for novice through experienced golfers. Sand Hills features a fully stocked pro shop, power cart rentals, and a clubhouse. Golf instruction and kids camps are available.

WIDDER STATION GOLF & COUNTRY CLUB

8395 Decker Road, Thedford

☎ 519-296-4653

🌐 widderstation.com

Widder Station Golf & Country Club is nestled in a picturesque country setting. The course offers a challenging 18 hole, par 72 course.



There is an abundance of recreation service providers in Lambton Shores that offer a variety of programs to meet the needs of residents. From dance lessons to fitness centres, Lambton Shores recreation service providers are committed to providing quality programs to help keep the public active and entertained while improving the quality of life for the community.

MARTIAL ARTS

GRAND BEND KARATE CLUB

☎ 519-318-9003

✉ grandbendkarate@gmail.com

INTEGRITY MARTIAL ARTS AND WELLNESS

7271 Arkona Road, Arkona

☎ 519-319-0005

LAKESIDE SEIKIDO

6276 Townsend Line, Forest

Master Russ Taylor

☎ 519-786-4090

🌐 lseikido.wixsite.com/lakeside-seikido

✉ lseikido@execulink.com

YOGA

ANNE'S YOGA WORKS

Anne Chute

☎ 519-243-3548

✉ achute@execulink.com

LAMBTON YOGA

Lynne Shiffer

☎ 519-899-2023

✉ lambtonyoga@gmail.com

LJ CENTRE

Lindsey Ashwoth-Ducharme

☎ 519-243-1713

🌐 ljcentre.com

✉ lindseyashworthducharme@gmail.com

FITNESS

AQUAFIT

☎ 519-381-7685

MY FIT ROOM

🌐 myfitroomstudio@gmail.com

✉ myfitroomstudio.com

FLK TAOIST TAI CHI SOCIETY

☎ 519-238-6312

🌐 taoist.org

FUN FITNESS WITH BONNIE

☎ 519-786-5491

GRAND BEND FITNESS

☎ 519-317-6646

🌐 grandbendfitness.com

HEALTH & FITNESS (NLCHC)

☎ 519-786-4545 ext. 281

ROCK GLEN RESORT AND RECREATION CENTRE

8685 Rock Glen Road, Arkona

☎ 519-828-3456

SUNCOR WELLNESS CENTRE (OPERATED BY THE YMCA)

☎ 519-786-9622

🌐 ymcaswo.ca

WORKOUT FOR YOUR LIFE

☎ 519-238-5555

✉ bethandjoe@hay.net

ZUMBA

☎ 519-381-7685

Visit us online at
**[lambtonshores.ca/
 sports-and-recreation](http://lambtonshores.ca/sports-and-recreation)**
 for a complete listing
 of contacts.



BALL HOCKEY

MEN'S BALL HOCKEY

WOMEN'S BALL HOCKEY

BASEBALL

**ARKONA LADIES TWO-PITCH
 BASEBALL**

**ARKONA MEN'S TWO-PITCH
 BASEBALL**

**FOREST DRAGONS' SENIOR
 MEN'S BASEBALL**

FOREST MINOR BASEBALL

GETTING ACTIVE RECREATIONAL SPORTS

GRAND BEND CO-ED BASEBALL LEAGUE

**GRAND BEND YOUTH BASEBALL
 ASSOCIATION**

📧 grandbend.com/baseball

**LAMBTON SHORES LIGHTNING YOUTH
 FASTBALL ASSOCIATION**

THEDFORD KID'S BALL

BASKETBALL

FOREST OPTIMIST YOUTH BASKETBALL

BOATING & SAILING

GRAND BEND YACHT CLUB

📧 gbyc.ca

**LAMBTON SHORES
 DRAGON BOAT CLUB**

📧 lambtonshoresdragonboatclub.ca

PORT FRANKS YACHT CLUB

📧 www.portfranksyachtclub.ca

✉ PFYCinfo@gmail.com

CURLING

FOREST CURLING AND SOCIAL CLUB

📧 forestcurling.ca

✉ info@forestcurling.ca



HOCKEY

GRAND BEND MARINERS

HUFF & PUFF HOCKEY

LAKESIDE OLD TIMERS HOCKEY

LAMBTON MIDDLESEX REC HOCKEY

**LAMBTON SHORES MINOR
HOCKEY ASSOCIATION**

📞 lambtonshoresminorhockey.ca

SKILL SHOTS HOCKEY SCHOOL

📞 skillshots.net

SUNDAY MORNING MEN'S LEAGUE

SUNDAY RAIDERS HOCKEY

**THEDFORD BOSANQUET OLD
TIMER'S LEAGUE**

**THEDFORD LEGACY LADIES
HOCKEY LEAGUE**

**THEDFORD LEGACY YOUTH
HOCKEY LEAGUE**

WEDNESDAY NIGHT HOCKEY LEAGUE

LAWN BOWLING

FOREST LAWN BOWLING

📞 lawnbowlingforest.ca

PICKLEBALL

**SUNCOR WELLNESS CENTRE—
LAMBTON SHORES YMCA**

7883 Amtelecom Parkway, Forest

📞 519-786-9622

📞 ymcaswo.ca



RINGETTE

FOREST XTREME RINGETTE ASSOCIATION

📧 forestringette.com



SHUFFLEBOARD

GRAND BEND SHUFFLEBOARD LEAGUE

THEDFORD SHUFFLEBOARD LEAGUE



SKATING CLUBS

FOREST SKATING CLUB

📧 forestskatingclub.org

THEDFORD SKATING CLUB

✉ thedford.skating@gmail.com



SOCCER

GRAND BEND DISTRICT SOCCER ASSOCIATION

📧 grandbendsoccer.ca

TAXANDRIA FALCONS SOCCER CLUB

📧 www.taxandriasoccer.on.ca

✉ info@taxandriasoccer.on.ca

✉ registration@taxandriasoccer.on.ca

VOLLEYBALL

FOREST OPTIMIST YOUTH VOLLEYBALL



There are over 100 community groups that exist in Lambton Shores. These groups are responsible for organizing many special events, community projects, recreation programs, beautification of our communities, and more. On the following pages you will find a listing of volunteer groups in our community. Visit us online at lambtonshores.ca/community-groups for the most up to date listings and contact info.

Please note: We have made our best efforts to include all groups in Lambton Shores, however if your group is not listed, please contact the Community Services Department at 519-243-1400 to ensure you are included in next year's guide.



ALGARVA #168 CARAVAN ORDER OF ALHAMBRA

🌐 algarva168.org

✉ algarva168@execulink.com

Algarva #168 Caravan of the Order of Alhambra is dedicated to assisting people with developmental disabilities in our community. To fund their work, they operate an annual golf tournament and a cash draw dance in Lambton Shores.

ARKONA LIONESS CLUB

The Arkona Lioness Club is a small group of dedicated women who work to raise funds to help support the needs of the local communities of Arkona, Forest, Port Franks, and surrounding rural areas. The group is very supportive of Arkona-area seniors.

ARKONA LIONS CLUB

Formed in 1984, the Arkona Lions Club has worked to assist the community of Arkona and surrounding areas. Current membership participates in fundraising, community service and promoting Arkona through an annual car show.

ARKONA SENIORS

The Seniors meet at the Seniors' Hall on the second Wednesday of the month (except July and August) for a potluck luncheon at 12 noon.

AUSABLE PORT FRANKS OPTIMIST CLUB

🌐 ausableportfranksoptimist.club

Every year, Optimists conduct 65 thousand service projects and serve over 6 million young people. Optimists worldwide value all children and help them develop to their full potential.



CARING QUILTERS OF LAMBTON SHORES

This group was formed for one purpose, to assist people in crisis. Each one of the comfort quilts is donated to Victims' Services volunteers who carry them in their cars. Meetings are every Wednesday from 10:00am to 2:00pm at the Port Franks Community Centre.



FOREST CANADA DAY COMMITTEE

Meetings are held during the months of February through June to organize the July 1st festivities. Activities at the event include a chicken BBQ, children's fair, local entertainment on the stage, Canada Day Idol contest and fireworks at dusk at Esli Dodge.

FOREST COMMUNITY FOUNDATION

📧 investinfores.org

The Foundation was established in 2001, and was funded by the proceeds from the sale of the Forest PUC. Approximately \$800,000 has been given to non-profit organizations within the former Town of Forest over the past twelve years.



FOREST & DISTRICT AGRICULTURAL SOCIETY

📞 519-786-6403 (Fair Board)

📧 forestfair.ca

✉ forestfair@xcelco.on.ca

The fair has become an annual tradition for family and friends to gather the fourth weekend in September. The facilities are also rented for auction sales, cattle shows, camping weekends and the Western Ontario Steam Threshers show.

FOREST EXCELSIOR BAND

✉ forestexcelsiorband@gmail.com

The band specializes in swing, jazz, and current popular music. Community members with some band experience are welcome to join.

FOREST FARMERS' AND ARTISAN MARKET

The Forest Farmers and Artisan Market takes place on Fridays from 8:00am–1:00pm in downtown Forest. The Farmers Market operates from the May 24th weekend until the Friday before Thanksgiving in October. Come to the Market to enjoy fresh seasonal vegetables and fruit, baked goods, maple syrup and more from local suppliers.

FOREST GARDEN CLUB

The group maintains the gardens located behind the Forest Library. General meetings are held on the second Monday of the month.

FOREST-LAMBTON MUSEUM SOCIETY

The society is always looking for volunteers to help with various events throughout the year at the museum, as well as events where the Travelling Museum is taken on the road.

FOREST LEGION PIPE BAND

Since 1959, the Forest Legion Pipe Band has maintained an active presence throughout Forest and surrounding area. It participates in local events whenever possible.

FRIENDS OF PINERY PROVINCIAL PARK

☎ 519-243-1521
🌐 pinerypark.on.ca

The Friends of the Pinery Park is a charitable organization dedicated to education, promotion, preservation and support of Pinery Provincial Park.

THE GARDEN CLUB OF PORT FRANKS

The Club provides a welcoming atmosphere for all who enjoy gardening and nature. Featuring guest speakers, workshops, garden tours and more! Come share the love for growing green.

GOOD TYME COUNTRY JAMBOREE

An afternoon of fun, friendship, music and dancing for seniors at the Thedford Legion. Patrons are encouraged to bring their instruments and voice for a Jam-A-Long! Proceeds from the free-will donations go to local schools and food banks.

GRAND BEND ART CENTRE

🌐 gbartcentre.com
☎ 519-872-7824

The Grand Bend Art Centre is a catalyst and innovator for artistic endeavors and community art projects that result in cultural and economic benefits for the local community. It is a not-for-profit community arts project that offers classes for adults and children, some free activities, and popular blues concert fundraisers.

GRAND BEND FARMERS' MARKET

🌐 grandbendfarmersmarket.ca
Fresh local produce and meats, homemade baked goods, locally handmade crafts and beautiful flowers. The market takes place every Wednesday from the Victoria Day Holiday to the last Wednesday before Thanksgiving.

GRAND BEND CANADA DAY COMMITTEE

The Committee plans a day-long event featuring free live entertainment at the Main Beach and a spectacular fireworks display at 10:00pm. Donations accepted.



GRAND BEND COMMUNITY FOUNDATION

 grandbendcommunityfoundation.ca

The Foundation has distributed more than \$700,000 in grants since 2002, supporting local schools, environmental groups, health and cultural organizations.

GRAND BEND & DISTRICT OPTIMIST CLUB

 grandbendoptimistclub.ca

The Grand Bend Optimists host a variety of fundraising events throughout the year where all funds raised go back into the community for projects such as Grand Bend Public School events, playground equipment, Optimist Skateboard Park and basketball courts.

GRAND BEND GOLDEN AGERS CLUB

Social club for older adults and seniors – meet weekly at the Grand Bend Legion around noon with luncheon served at 12:30pm.

GRAND BEND & AREA HORTICULTURAL SOCIETY

The Grand Bend and Area Horticultural Society is committed to fostering education in horticultural practices and helping improve and beautify our environment. Members share their love of plants and gardening.



GRAND BEND WOMEN'S INSTITUTE

 fwio.on.ca


Grand Bend Women's Institute is a branch of the well-established Federated Women's Institutes of Ontario. The group exists to offer fun, fellowship and education to women of all ages. Committed to community support and personal growth for members.

HILLBILLIES, OUTHOUSE #3

The "Hillbillies" is a unit of Shriners International; the singular purpose is to raise funds for the Shriners Hospitals for Children and/or patient transportation. "Outhouse #3" is a subsidiary unit of the London-based Clan 59 and routinely hosts several meat raffles during the year.



HURON COUNTRY PLAYHOUSE GUILD

 draytonentertainment.com/volunteer#huron

The Huron Country Playhouse Guild is a volunteer organization of local women who continue to support the Huron Country Playhouse. Working year-round raising funds, assisting with ushering, operating the Gift Shoppe and staffing the Meet and Greet kiosk; and while doing this, have a great deal of fun.

IPPERWASH AND AREA COMMUNITY SAFETY COMMITTEE

🔗 ipperwashareacsc.com

The Committee oversees and monitors the local Neighbourhood Watch areas. Committee meetings are held regularly to address topics.

KIWANIS CLUB OF FOREST

🔗 forestkiwanis.org

The Kiwanis Club of Forest is kept busy with ongoing and special projects. The major project is the Kineto Theatre. The goal is to provide a quality entertainment and meeting facility to area residents and visitors to the Forest community.

LAKE SMITH CONSERVATIONISTS

The Lake Smith Conservationists support nature initiatives in Lambton, Huron and Middlesex counties. They also partner with organizations that are planning projects for youth. Volunteers raise funds through fish fries and the annual March Game Dinner.

LAKESIDE FLYERS

🔗 forestlakesideflyers.weebly.com

A small club with a high level of participation by the members, whose main objective is to have fun flying model planes.

LAMBTON HISTORICAL SOCIETY

The Lambton Historical Society exists to research, collect, preserve, exhibit, and publish historical documents and artifacts.



LAMBTON SHORES COMMUNITIES IN BLOOM COMMITTEE

🔗 communitiesinbloom.ca

The Committee exists to promote and plan the Communities in Bloom program within the Municipality. The Lambton Shores program has won provincial, national and international categories over the past 7 years.

LAMBTON SHORES NATURE TRAILS COMMITTEE (LSNT)

🔗 lsntblazers.com

LSNT is a volunteer group dedicated to update & maintain existing nature trails and help build other community and connector trails in Lambton Shores & Vicinity in partnership with landowners.

MASONIC LODGE, CASSIA #116 LODGE

🔗 sarniadistrictmasons.ca

A charitable organization, a part of Sarnia district and a member body of the Grand Lodge of Freemasons of the Province of Ontario. Post-secondary bursary available.



NORTH LAMBTON QUILTERS GUILD

Established in 1989 to share a love of quilting. Meetings include hands-on activities. All skill levels are taught. Projects shared are personal and community-minded.

OPTIMIST CLUB OF FOREST

Dedicated to service in the former Town of Forest, and now the Municipality of Lambton Shores. Sponsoring youth volleyball, basketball, golf, recreational hockey, as well as many community and health-related projects.

ORDER OF THE EASTERN STAR, FOREST CHAPTER #116

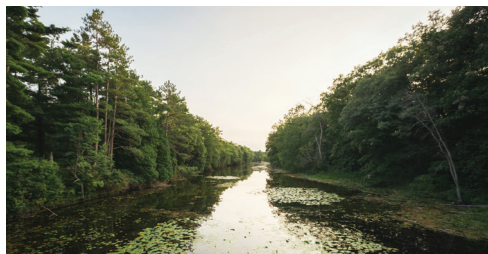
☎ easternstar.on.ca

The Order of the Eastern Star is the largest worldwide fraternal organization to which both men and women may belong.

PARTNERS IN LEARNING

☎ partnersinlearning.ca

Partners in Learning provides peer learning through a variety of five week courses of general interest. Moderators offer ideas and guidance for participants who are encouraged to discuss and present a variety of topics.



PORT FRANKS AND AREA CAMERA CLUB

☎ portfrankscameraclub.com

Come and enjoy guest speakers, information sessions, Comment & Critique nights and Walkabouts. Meetings are held on the second and fourth Mondays of the month upstairs in the Port Franks Community Centre.

PORT FRANKS DUNES DUPLICATE BRIDGE

✉ dunesbridgepf@gmail.com

Exists to promote bridge in the area.



PORT FRANKS SENIORS CLUB

Programs and events include: Euchre-Rama, bid euchre, darts, euchre, shuffleboard, bridge, badminton, bus trips, picnics and a Christmas party. Executive meetings occur on the first Tuesday of each month at Port Franks Community Centre.

THE PROBUS CLUB OF FOREST

☎ probus.org

The Probus Club of Forest was chartered in October 2009. The Club meets on Wednesday mornings at the North Lambton Community Health Centre.

THE PROBUS CLUB OF GRAND BEND & AREA (MEN'S)

☎ probus.org

The Club welcomes all retired or semi-retired gentlemen in the Grand Bend Area. A fun sharing experience that offers opportunity for fellowship combined with thought provoking, exceptional speakers at every meeting.

THE PROBUS CLUB OF GRAND BEND & AREA (WOMEN'S)

☎ probus.org

Women's Probus of Grand Bend and Area is an organization for retired business and professional women. Meetings feature presentations, coffee, and fellowship, and opportunities for organized field trips.



THE ROTARY CLUB OF GRAND BEND INC.

☎ grandbendrotary.com

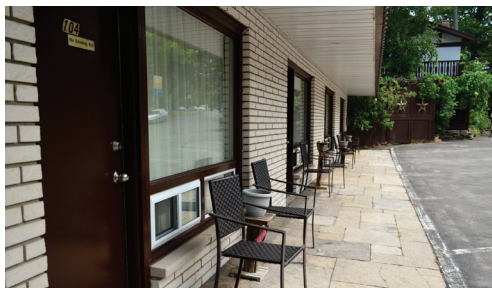
The Rotary Club of Grand Bend has about 40 members and continues to raise funds to give back to the local community and international projects.

ROYAL OAK ODD FELLOWS LODGE #108

The Forest Odd Fellows is a fraternal organization that is open to anyone ages 18 years or older.

ROYAL REBEKAH LODGE #389

The Royal Rebekah Lodge is a fraternal organization that is in place for the betterment of mankind. Anyone ages 16 years or older can join.



SPIRIT OF THEDFORD COMMUNITY FOUNDATION

The Spirit of Thedford helps to provide financial support for community projects and plans annual events like an Easter Egg hunt.

SUNSET CINEMA FILM

The group presents a variety of films on the first Thursday of each month, September through May at the Grand Bend and Area Community Health Centre.

THEDFORD GARDEN CLUB

The Thedford Garden Club is a group dedicated to making Thedford beautiful. The club maintains and plans gardens in the community.

THEDFORD SENIORS CLUB

Activities are organized by the Thedford Seniors Club and take place at the Village Complex on the corner of Pearl and Main Streets. Join for cards, prizes, coffee and a snack.

WEST COAST LIONS CLUB, GRAND BEND

 e-clubhouse.org/sites/westcoaston

We serve where we live. All costs are covered from dues, ensuring that all donated funds go to the causes.

WESTERN ONTARIO STEAM THRESHERS ASSOCIATION

 steamthresher.com

The purpose is to preserve and honor agricultural heritage, and provide an opportunity for the community to remember the past in an environment of genuine fun and excitement.



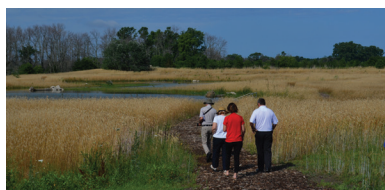
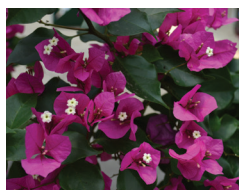


LAMBTON SHORES COMMUNITIES IN BLOOM

Communities in Bloom is a Canadian non-profit organization committed to fostering civic pride, environmental responsibility and beautification through community involvement and the challenge of a national program, with focus on enhancing green spaces in communities.

Communities in Bloom began in 1995, with 29 Canadian communities being honoured. The program now includes hundreds of communities across Canada, and holds an international challenge that includes communities across the United States, Asia, and Europe.

Lambton Shores has been a **National Winner** in the 2012 competition, **Class of Champions Winner** in 2013, and most recently, **International Champions** in 2016!



LAMBTON SHORES

COMMUNITIES IN BLOOM ANNUAL PROGRAMS

TRASH BASH EVENTS

Community clean-up events take place in April and July.

ADOPT-A-POT & ADOPT-A-PLOT

Volunteer to plant and maintain planters and pots through the spring, summer, fall, and winter so that residents and visitors can enjoy a beautiful community year-round!

GARDEN OF THE WEEK

Each week, for 12 weeks, 5 gardens will be selected as the "Garden of the Week" by community members. The winning gardens will be featured in the local newspapers, on our web page, and on social media.

BEST BLOOMIN' BUSINESS

A friendly competition for all Lambton Shores businesses to participate in! Help fill our community with each year's theme colours. No formal entry is necessary – just put your blooms on display!

NATIVE TREES

Plant a native tree on your property! Each year "featured trees" are selected and discounts are given at select retailers on these select tree varieties.

COMMUNITY GARDENS

Continuing work with the success of the existing community gardens in Grand Bend, Forest, and Port Franks.

ANNUAL FUNDRAISER

BBQ fundraiser at the Arkona Home Hardware as part of the Arkona Fantastic Day celebrations.

DISCOVERIES THAT MATTER TOUR

A self-guided tour will take you to see what the judges see when they visit our community! The committee has been working hard to prepare a fantastic tour of beautiful gardens, historical landmarks, businesses, and tourist destinations throughout Lambton Shores. More details will be released as they become available.



For more information on the Communities in Bloom Committee, please contact the Community Services Department at **519-243-1400** or **1-866-943-1400**.



Like us on Facebook facebook.com/CiBLambtonShores



Follow us on Instagram @ciblambtonshores

4-H ASSOCIATION (LAMBTON COUNTY)

📞 4-hontario.ca

4-H helps young people (10-21 years of age) learn self-confidence and new skills. 4-H Ontario Members can choose to be involved in any of over 60 different projects ranging from drama to woodworking, life skills to livestock, and square dancing to conversation.

FOREST CLIFF CAMP

📞 forestcliff.ca
✉ info@forestcliff.ca

Week-long camps are available for youth entering grades two to seven, and teens entering grades seven to nine. Available activities include: aqua-sledding, knee boarding, swimming, kayaking, canoeing, sailing, climbing wall, horseback riding, handicrafts, science, drama and more.

GIRL GUIDES OF CANADA

📞 1-800-565-8111
📞 girlguides.ca

Girl Guides of Canada enables girls to be confident, resourceful and courageous, and to make a difference in the world. To find a program, visit the Girl Guides website.

GRAND BEND YOUTH, ART AND COMMUNITY CENTRE

16 Municipal Drive, Grand Bend
📞 519-872-7824
📞 gbartcentre.com

The Grand Bend Youth Centre is operated by the Grand Bend Art Centre in partnership with the Grand Bend Optimist Club.

LAMBTON CENTRE, UNITED CHURCH OF CANADA

📞 519-786-5663
📞 lambtoncentre.com
✉ info@lambtoncentre.com

Lambton Centre offers summer camp programs for children and youth ages five to fifteen. Campers enjoy a wide variety of activities including: crafts, drama, outdoor recreation, nature, swimming, archery, and more.



LAMBTON SHORES YMCA

📞 519-786-9622
📞 ymcaswo.ca

The Lambton Shores YMCA runs a number of youth-based programs and camps throughout the year at the Shores Recreation Centre in Forest.

SCOUTS CANADA

📞 1-888-855-3336
📞 scouts.ca

Scouts Canada's mission is "to contribute to the education of young people, through a value system based on the Scout Promise and Law, to help build a better world where people are self-fulfilled as individuals and play a constructive role in society".



GETTING ACTIVE LEGIONS

ROYAL CANADIAN LEGION BR. 176, FOREST

58 Albert Street, Forest

☎ 519-786-5357

🌐 forestlegion.ca

The Legion is an organization that provides facilities and support for veterans. The facility is also used by seniors and youth groups. Many charities are supported through the lottery program and many groups use the facility for meetings. The banquet hall is available for rent by the community. Regular programs that take place at the Legion include: shuffleboard, darts, seniors' games, and cards.

ROYAL CANADIAN LEGION BR. 498, GRAND BEND

20 Municipal Drive, Grand Bend

☎ 519-238-2120

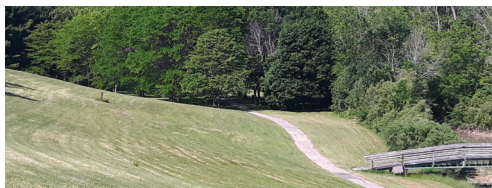
A public facility for all to enjoy. Regular events include bingo, meat draws, darts, line dancing, and entertainment every Saturday afternoon.

ROYAL CANADIAN LEGION BR. 278, THEDFORD

43 Nelson Street, Thedford

☎ 519-296-4939

This facility is available for many functions including birthdays, anniversaries, and small gatherings.



CONTACT HOUSE

📞 519-786-5692

The Contact House has been in operation since 1988 and receives donations from the public and other agencies to provide food items to families in Lambton County who are in need.

WELCOME WAGON

🌐 welcomewagon.ca

Welcome Wagon is the only national, Canadian-Owned, free greeting service celebrating over 80 years. The group greets people who are moving into the community from another area, planning a wedding, expecting a baby, a new executive or manager, and first-time grandparents.

FOREST BIA

🌐 shopforest.ca

The BIA beautifies and promotes the downtown core of Forest. The group organizes and oversees special events and advertising campaigns for the merchants and residents within the market and for tourists.

**GRAND BEND AREA CHAMBER OF COMMERCE & TOURISM**

📞 519-238-2001

🌐 GrandBendChamber.ca

✉ info@grandbendchamber.ca

🌐 GrandBendTourism.com

✉ info@grandbendtourism.com

Chamber Member services include networking, advocacy, promotion and information. The Chamber also provides tourism and visitor services to the area, promotion of area amenities, attractions and businesses to residents and visitors.



CONTACT INFORMATION

Phone: 519-243-1400
Toll Free: 866-943-1400

ADMINISTRATION
7883 Amtelecom Parkway
Forest, ON, N0N 1J0

FINANCE
4 Ontario Street North
Grand Bend, ON, N0M 1T0

COMMUNITY SERVICES
9575 Port Franks Road, RR1
Thedford, ON, N0M 2N0



@LAMBTONSHORES



/LAMBTON.SHORES



@LAMBTONSHORES

